



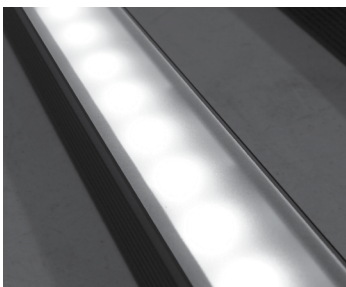
- Compact, variable light fixture for dry, damp or wet location use
- Fixture comes in 6" increments (12" minimum).
- Many options in optics, color temperature and accessories.
- Multiple different types of lenses.
- Boca Flasher's patented CleanDim® technology ensures even dimming from 0-100%.
- Uses standard line voltage dimmers.
- Fixtures are compatible with both forward and reverse phase dimming or can use Boca's SDS module for 0-10V, Dali or DMX Dimming.
- Clear anodized aluminum or black finish standard.
- Total linear feet per power feed: 40ft @ 120V.
- Contact Boca Flasher for tips with custom installations.



PRODUCT SPECIFICATIONS:

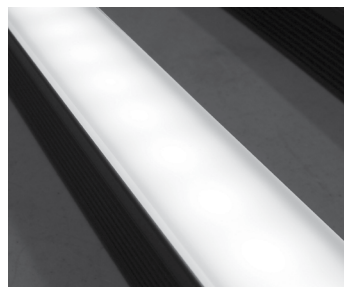
COLOR OPTION		OPTIC	VOLTAGE	FINISH	LOCATION	MOUNTING	LENS	BODY OPTIONS	
HPNLS	HO	2700K	10°	120V	A Clear Anodized Aluminum	I Interior	F Fixed	C Clear	HL Hexcell Louver
		3000K	30°	277V	B Black	E Exterior	D Diffused	SB Square Baffle	
		3500K	60°			W Wet	SI Satin Ice (Interior Use Only)	SSB Slanted Baffle	
		4000K	10°x60°				OP Opal White	SKB Kicker Baffle	
		5000K	30°x60°					HL* Hexcell Louver (Cannot be used with Satin Ice White or 120° optic)	
		Amber	120°						
		Red							
		Green							
		Blue							

LENS OPTIONS:



Diffused*

- Interior or exterior use.
- 87% transmission.
- Lens is 1/8" (.09) thick, adds 1/16" to overall height of fixture. Call factory for more information.



Satin Ice White*

- Interior use only.
- Best for direct view use.
- 42% transmission.
- Lens is 1/4" (.25) thick, adds 1/8" to overall height of fixture. Call factory for more information.

HPNLS-HO

Line Voltage Linear LED Strip Fixture



TECHNICAL SPECIFICATIONS:

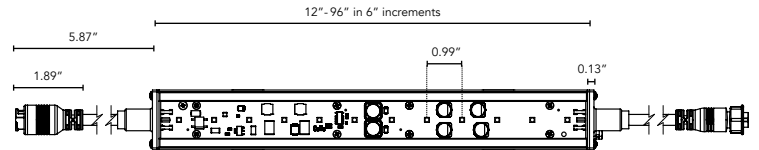
WATTAGE	16 watts per linear ft.
INPUT VOLTAGE	90-120V 230-277V
CONTROL	Leading Edge/Trailing Edge Line Dimmer, 0-10V, DALI, DMX*
LED SPACING	1" on center
LENGTH	12" - 96", 6" increments
TOTAL HEIGHT	1.75" (not including clip)
TOTAL WIDTH	1.68"
COLOR OPTIONS	2700K, 3000K, 3500K, 4000K, 5000K, amber, red, green, blue
MOUNTING	Fixed, Swivel, 3" Arc or 6" Arc
AVAILABLE OPTICS	10°, 30°, 60°, 10° x 60°, 30° x 60°, 120°
RATING	IP60, IP65, IP68
COLOR RENDERING INDEX (CRI)	90 + CRI
POWER CABLE	UL Standard 6 ft.

*Uses Boca SDS Module for 0-10V, Dali, or DMX Dimming.

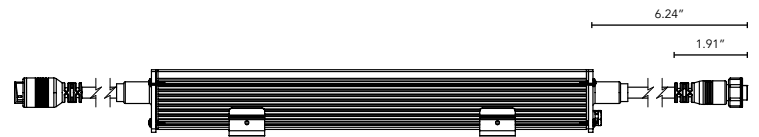
DIMENSIONS:

- For vertical installation please contact the factory for specific mounting instructions.
- For installations above 4' please contact the factory.

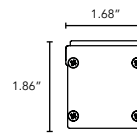
Plan View



Elevation View

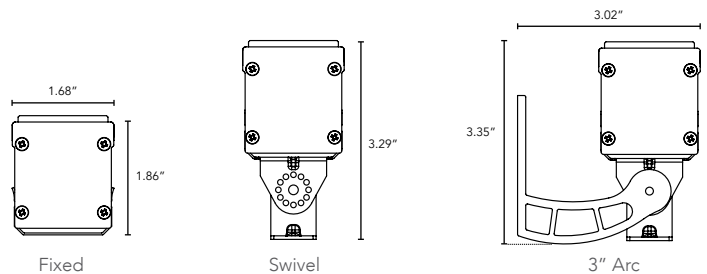


End View



MOUNTING INFORMATION:

- For vertical installation please contact the factory for specific mounting instructions.

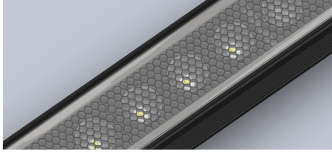


HPNLS-HO

Line Voltage Linear LED Strip Fixture



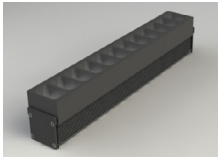
BODY CHOICES:



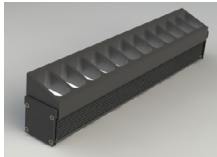
Hexcell Louver

- Economical solution to off axis glare issues.
- Louver is located flush to secondary optic, preventing unwanted striation.
- Louver cannot be utilized when no optic (120°) is specified.
- Louver is behind lens to ensure no damage is done during installation or after. This also ensures no dust build-up.
- Louver ships pre-fitted making on site fixture installation easy.
- No unsightly clips, screws, or brackets.
- Can be used with other baffles.
- Adds nothing to overall height.
- To specify add "HL" in options box.

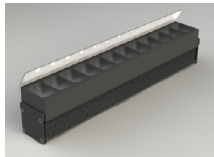
*Additional charges may apply.



SB - Square Baffle



SSB - Sq. Slanted Baffle

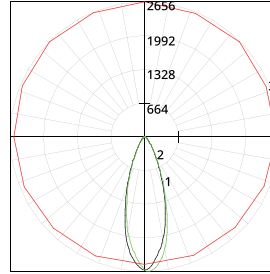


SKB - Sq. Kicker Baffle

Baffle Square Design

- Design cuts off light at 90°
- Baffles are lightweight black PVC with non-reflective surfaces to avoid glare from interior sections.
- One piece baffle slides onto the extruded housing making installation easy.
- SB only adds .75" to overall height
SSB adds .90" to overall height
SKB adds 1.625" to overall height
- To specify add "SB" or "SSB" for slanted version or "SKB" for kicker version in options box.

LUMINAIRE INFORMATION:



Fixture Type: 3500°K, 24° optic, 120V, 12"
Total lumen Output: 4840 Lumens per 4ft.
Luminaire Efficacy: 80.6 Lumens per watt
Maximum Candela: 2655.83
Located at Horizontal Angle: 90
Vertical Angle: 2

- #1 - Vertical Plane Through Horizontal Angles (0 - 180)
- #2 - Vertical Plane Through Horizontal Angles (90 - 270)
- #3 - Horizontal Cone Through Vertical Angle (2) (Through Max. Cd.)

For lux multiply fc by 10.76fc reading taken at 100% capacity (no dimming)

Characteristics:

LUMENS PER LAMP	1203.5 (1 lamp)
TOTAL LAMP LUMENS	1203.5
LUMINAIRE LUMENS	1204
TOTAL LUMINAIRE EFFICIENCY	100%
LUMEN EFFICACY RATING	80
TOTAL LUMINAIRE WATTS	15.02
BALLAST FACTOR	1.00
CIE TYPE	Direct
SPACING CRITERION (0-180)	0.58
SPACING CRITERION (90-270)	0.62
SPACING CRITERION (Diagonal)	0.60
BASIC LUMINOUS SHAPE	Rectangular
LUMINOUS LENGTH (0-180)	0.31m
LUMINOUS WIDTH (90-270)	0.04m
LUMINOUS HEIGHT	0.00m