



LUMELINE-RT

Direct View Linear LED Strip Fixture

Customer:

Date:

Type:

Project:



- Compact, variable light fixture for dry, damp or wet location use.
- Fixture comes in 6" increments (12" minimum)
- Many options in optics, color temperature and accessories.
- Boca Flasher's patented CleanDim® technology ensures even dimming from 0-100%.
- Fixtures are compatible with both forward and reverse phase dimming or can use Boca's SDS module for 0-10V or DMX dimming.
- Uses standard low voltage transformers.
- Clear anodized aluminum or black finish standard.
- Total linear feet per power feed: Voltage Dependent Class 2 limited.
- Contact Boca Flasher for tips with custom installations.

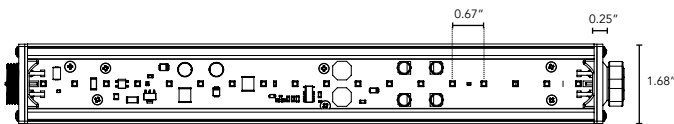


PRODUCT SPECIFICATIONS:

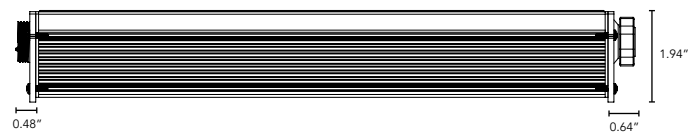
	WATTAGE	COLOR OPTION	OPTIC	FIXTURE VOLTAGE	FINISH	TRANSFORMER PRIMARY VOLTAGE	LOCATION	MOUNTING	LENS
LUMELINE-RT	8W		120°	24VAC					
		2000K			A Clear Anodized Aluminum	120V	I Interior-IP50	F Fixed	C Clear
		2400K				230V	E Exterior-IP65	S Swivel	D Diffused
		2700K			B Black	227V	W Wet-IP68	3Arc 3" Arc Swivel	SI Satin Ice (Interior Use Only)
		3000K				Fixture is 24VAC		6Arc 6" Arc Swivel	OW Opal White (Exterior Use Only)
		3500K							
		4000K							
		5000K							

DIMENSIONS:

Plan View



Elevation View



LUMELINE-RT

Direct View Linear LED Strip Fixture



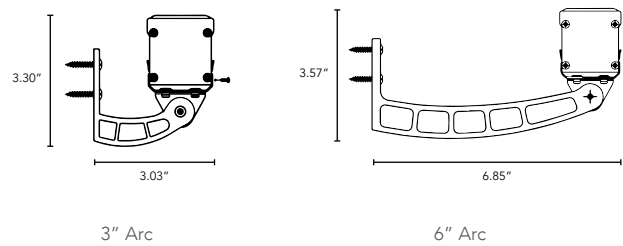
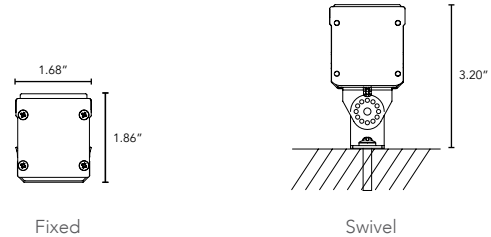
TECHNICAL SPECIFICATIONS:

WATTAGE	8 watts per linear ft.
INPUT VOLTAGE	24VAC
CONTROL	Standard magnetic low voltage dimming
LED SPACING	0.67" on center
LENGTH	6" increments, (12" max) allow 1/4" for each end cap and 2" for power feed cable
TOTAL HEIGHT	1.04" (not including clip) or 1.75" with Opal White lens
TOTAL WIDTH	1.68"
COLOR OPTIONS	2000K, 2400K, 2700K, 3000K, 3500K, 4000K, 5000K
MOUNTING	Fixed, Swivel, 3" Arc or 6" Arc
AVAILABLE OPTICS	120°
RATING	IP50, IP65, IP68
COLOR RENDERING INDEX (CRI)	90 + CRI
POWER CABLE	UL Standard 6 ft.
ENVIRONMENTAL	Operating temperature--40°F-140°F Ambient(-40°C-60°C)** Storage temperature -40°F-140°F Ambient indoor fixtures operation limited to =<50% relative humidity

** Military spec available under special request-lead times may be impacted.

MOUNTING INFORMATION:

- For vertical installation please contact the factory for specific mounting instructions.
- For installation above 4' please contact the factory.



LUMINAIRE INFORMATION:

IES Files Pending

- Specific Files Available On Request