

- Compact, variable light fixture for dry location use
- Fixture comes in 6" increments (12" minimum).
- Many options in optics, color temperature and accessories.
- Three different types of lenses.
- Boca Flasher's patented CleanDim® technology ensures even dimming from 0-100%.
- Uses standard line voltage dimmers.
- Fixtures are compatible with both forward and reverse phase dimming or can use Boca's SDS module for 0-10V or DMX Dimming.
- Clear anodized aluminum or black finish, check factory for availability.
- Contact Boca Flasher for tips with custom installations.



PRODUCT SPECIFICATIONS: MUST COMPLETE THE QUICKSHIP ORDERING GUIDE (SEE PAGE 4)

HPNLS	WATTAGE	COLOR OPTION	OPTIC	VOLTAGE	FINISH	LOCATION	MOUNTING	LENS	OPTIONS	QS
	Lo8 6W/FT	2700K	10°	120V	A Clear Anodized Aluminum	I Interior	F Fixed	C Clear	SB Square Baffle	QS Quickship
	Lo8 10W/FT	3000K	30°	277V	B Black		S Swivel	D Diffused	ASYM Asymmetric Baffle	
		3500K	60°				H Hinge	SI Satin Ice (Interior Use Only) * Not Available With Hexcell or Baffle Options	SKB Kicker Baffle	
		4000K	10°x60°				3Arc 3" Arc Swivel		HL Hexcell Louver (Cannot be used with Satin Ice White or 120° optic)	
		5000K	30°x60°				6Arc 6" Arc Swivel			
		Amber	120°							
		Red								
		Green								
		Blue								

Quick Ship Terms:

- Orders Must be Received by 12pm EST
- Quick Ship Fixtures are Interior Use Only.
- Only Lengths of 500 Ft. or Less Can Be Ordered.
- No Custom Modifications are Available, Only the Standard Qualifies.
- Any Delays In Approvals May Void Quick Ship Possibility.
- Errors/Omissions will be Sole Responsibility of Purchaser.
- Additional Costs May Apply.
- Minimum Orders Will Apply.
- Subject to All Standard Approvals.
- All Orders Subject to All Boca Flasher Terms and Conditions.

HPNLS-LO Order Terms:

- Lead Time: **10 Business Days After Approvals**
- (1) Power feed and (1) Terminator Included per 43 feet
- 2 Clips included per less than 48" lengths and 3 Clips included per on 48" & 96" lengths

HPNLS-LO Quick Ship

Line Voltage Linear LED Strip Fixture



TECHNICAL SPECIFICATIONS:

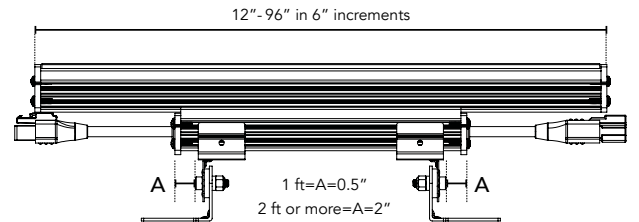
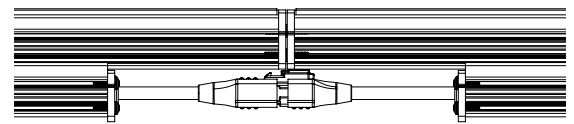
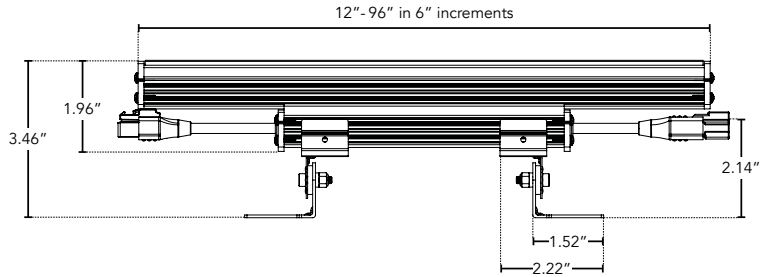
WATTAGE	6 or 10 watts per linear ft.
INPUT VOLTAGE	90-120V 230-277V
CONTROL	Leading Edge/Trailing Edge line dimmer 0-10V, DMX*
LED SPACING	1.5" on center
LENGTH	12"- 96", 6" increments (Add .25" for end caps)
TOTAL HEIGHT	1.75" (not including clip)
TOTAL WIDTH	1.68"
COLOR OPTIONS	2700K, 3000K, 3500K, 4000K, 5000K, Amber, Red, Green, Blue
MOUNTING	Fixed, Swivel, 3" Arc or 6" Arc
AVAILABLE OPTICS	10°, 30°, 60°, 10° x 60°, 30° x 60°, 120°
RATING	IP60, IP65, IP68
COLOR RENDERING INDEX (CRI)	90 + CRI
POWER CABLE	UL Standard 6 ft.

*Uses Boca SDS Module for 0-10V, Dali, or DMX Dimming.

DIMENSIONS:

- For vertical installation please contact the factory for specific mounting instructions.
- For installations above 4' please contact the factory.

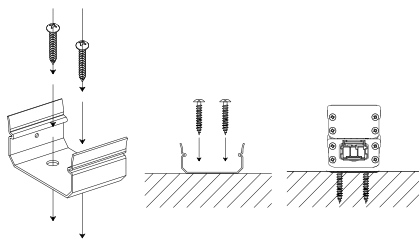
Elevation View



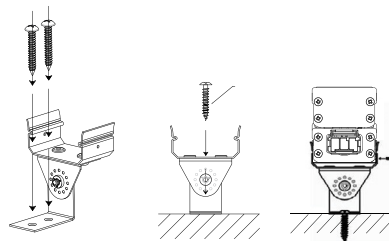
MOUNTING INFORMATION:

- Fixtures 1-2ft, Place clips 0.5" from edge as shown.
- Fixtures more than 2ft, Place clips 2" from edges as shown.

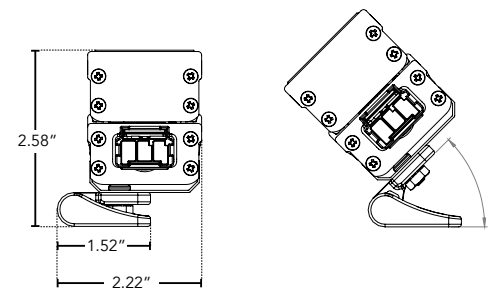
Fixed



Swivel



Hinge

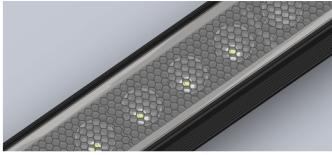


HPNLS-LO Quick Ship

Line Voltage Linear LED Strip Fixture



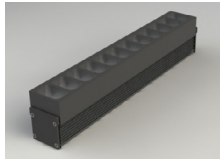
BODY CHOICES:



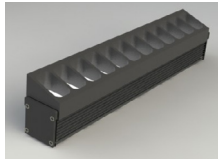
Hexcell Louver

- Economical solution to off axis glare issues.
- Louver is located flush to secondary optic, preventing unwanted striation.
- Louver cannot be utilized when no optic (120°) is specified.
- Louver is behind lens to ensure no damage is done during installation or after. This also ensures no dust build-up.
- Louver ships pre-fitted making on site fixture installation easy.
- No unsightly clips, screws, or brackets.
- Can be used with other baffles.
- Adds nothing to overall height.
- To specify add "HL" in options box.

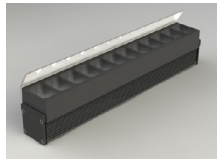
*Additional charges may apply.



SB - Square Baffle



ASYM - Asymmetrical Baffle

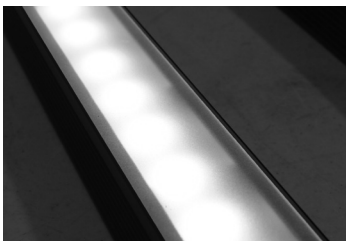


SKB - Sq. Kicker Baffle

- Design cuts off light at 90°
- Baffles are lightweight black PVC with non-reflective surfaces to avoid glare from interior sections.
- One piece baffle slides onto the extruded housing making installation easy.
- SB only adds .75" to overall height
ASYM adds .90" to overall height
SKB adds 1.625" to overall height
- To specify add "SB" or "ASYM" for slanted version or "SKB" for kicker version in options box.

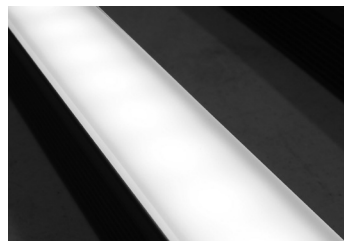
LENS OPTIONS:

*Additional charges apply.



Diffused*

- Interior or exterior use.
- 87% transmission.
- Lens is 1/8" (.09) thick, adds 1/16" to overall height of fixture. Call factory for more information.



Satin Ice White*

- Interior use only.
- Best for direct view use.
- 42% transmission.
- Lens is 1/4" (.25) thick, adds 1/8" to overall height of fixture. Call factory for more information.

* Not Available With Hexcell or Baffle Options

LUMINAIRE INFORMATION:

LUMENS PER LAMP -3500K 30X60	936 (1 lamp)
TOTAL LAMP LUMENS	936
LUMINAIRE LUMENS	936
TOTAL LUMINAIRE EFFECIENCY	100%
LUMEN EFFECACY RATING	94
TOTAL LUMINAIRE WATTS	10.02
BALLAST FACTOR	1.00
CIE TYPE	Direct
SPACING CRITERION (0-180)	0.58
SPACING CRITERION (90-270)	0.62
SPACING CRITERION (Diagonal)	0.60
BASIC LUMINOUS SHAPE	Rectangular
LUMINOUS LENGTH (0-180)	0.31m
LUMINOUS WIDTH (90-270)	0.04m
LUMINOUS HEIGHT	0.05m

- Lo8 Data - 10W for 6W use 0.65 multiplier
- Specific Files Available On Request



HPNLS-LO - QuickShip

ORDER GUIDE

Customer:

Date:

PO:

Project:

Distributor:

TYPE	LENGTH 6" Increments	QUANTITY	HPNLS	WATTAGE	COLOR OPTION	OPTIC	VOLTAGE	FINISH	LOCATION	MOUNTING	LENS	OPTIONS
			HPNLS						I			QS
			HPNLS						I			QS
			HPNLS						I			QS
			HPNLS						I			QS
			HPNLS						I			QS
			HPNLS						I			QS
			HPNLS						I			QS

Additional Power Feeds/End Caps Needed? Fill In Quantity, Additional Costs May Apply:

Project Notes:

HPNLS-LO Order Terms:

- Lead Time: 10 Business Days After Approvals
- (1) Power feed and (1) Terminator Included per 43 feet
- 2 Clips included per less than 48" and 3 Clips included per 48" & 96"

Quick Ship Terms:

- Orders Must be Received by 12pm EST
- Quick Ship Fixtures are Interior Use Only.
- Only Lengths of 500 Ft. or Less Can Be Ordered.
- No Custom Modifications are Available, Only the Standard Qualifies.
- Any Delays In Approvals May Void Quick Ship Possibility.
- Errors/Omissions will be Sole Responsibility of Purchaser.
- Additional Costs May Apply.
- Minimum Orders Will Apply.
- Subject to All Standard Approvals.
- All Orders Subject to All Boca Flasher Terms and Conditions.

Boca Flasher, Inc. 508 South Military Trail, Deerfield Beach, Florida 33442 USA Phone: 561.989.5338 Fax: 561.982.8323 © 2020 Boca Flasher, Inc

We are constantly improving our fixtures and reserve the right to change options and specifications. For specific requirements, contact your Boca Flasher sales representative. This product complies with IES LM-79-08 testing procedures and relevant standards. HPNLS-LO meets or exceeds Title 24 Compliance. >45 Lumens per Watt. For additional information and details visit our website at www.bocafasher.com. All products proudly manufactured in the USA. All rights reserved. All names and trademarks are property of their respective owners.