

- Compact, variable light fixture for dry location use
- Fixture comes in 6" increments (12" minimum).
- Many options in optics, color temperature and accessories.
- Multiple different types of lenses.
- Boca Flasher's patented CleanDim® technology ensures even dimming from 0-100%.
- Uses standard line voltage dimmers.
- Fixtures are compatible with both forward and reverse phase dimming or can use Boca's SDS module for 0-10V, Dali or DMX Dimming.
- Clear anodized aluminum or black finish standard.
- Total linear feet per power feed: 40ft @ 120V.
- Contact Boca Flasher for tips with custom installations.



PRODUCT SPECIFICATIONS: MUST COMPLETE THE QUICKSHIP ORDERING GUIDE (SEE PAGE 4)

COLOR OPTION		OPTIC	VOLTAGE	FINISH	LOCATION	MOUNTING	LENS	BODY OPTIONS	QS
HPNLS	HO				I				QS
	2700K	10°	120V	A Clear Anodized Aluminum	I Interior	F Fixed	C Clear	HL Hexcell Louver	QS Quickship
	3000K	30°	277V			S Swivel	D Diffused	SB Square Baffle	
	3500K	60°		B Black		H Hinge	SI Satin Ice (Interior Use Only) * Not Available With Hexcell or Baffle Options	ASYM Asymmetric Baffle	
	4000K	10°x60°				3Arc 3" Arc Swivel		SKB Kicker Baffle	
	5000K	30°x60°				6Arc 6" Arc Swivel		HL* Hexcell Louver (Cannot be used with Satin Ice White or 120° optic)	
	Amber	120°							
	Red								
	Green								
	Blue								

Quick Ship Terms:

- Orders Must be Received by 12pm EST
- Quick Ship Fixtures are Interior Use Only.
- Only Lengths of 500 Ft. or Less Can Be Ordered.
- No Custom Modifications are Available, Only the Standard Qualifies.
- Any Delays In Approvals May Void Quick Ship Possibility.
- Errors/Omissions will be Sole Responsibility of Purchaser.
- Additional Costs May Apply.
- Minimum Orders Will Apply.
- Subject to All Standard Approvals.
- All Orders Subject to All Boca Flasher Terms and Conditions.

HPNLS-HO Order Terms:

- Lead Time: **10 Business Days After Approvals**
- (1) Power feed and (1) Terminator Included per 43 feet
- 2 Clips included per less than 48" lengths and 3 Clips included per on 48" & 96" lengths

HPNLS-HO Quick Ship

Line Voltage Linear LED Strip Fixture



TECHNICAL SPECIFICATIONS:

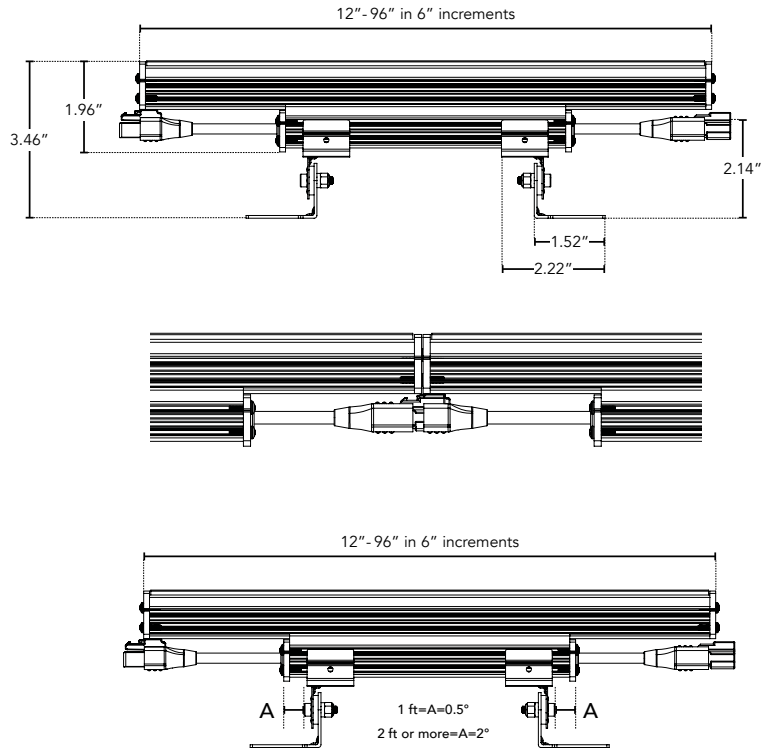
WATTAGE	16 watts per linear ft.
INPUT VOLTAGE	90-120V 230-277V
CONTROL	Leading Edge/Trailing Edge Line Dimmer, 0-10V, DALI, DMX*
LED SPACING	1" on center
LENGTH	12"- 96", 6" increments (Add .25" for end caps)
TOTAL HEIGHT	1.75" (not including clip)
TOTAL WIDTH	1.68"
COLOR OPTIONS	2700K, 3000K, 3500K, 4000K, 5000K, amber, red, green, blue
MOUNTING	Fixed, Swivel, 3" Arc or 6" Arc
AVAILABLE OPTICS	10°, 30°, 60°, 10° x 60°, 30° x 60°, 120°
RATING	IP60
COLOR RENDERING INDEX (CRI)	90 + CRI
POWER CABLE	UL Standard 6 ft.

*Uses Boca SDS Module for 0-10V, Dali, or DMX Dimming.

DIMENSIONS:

- For vertical installation please contact the factory for specific mounting instructions.
- For installations above 4' please contact the factory.

Elevation View

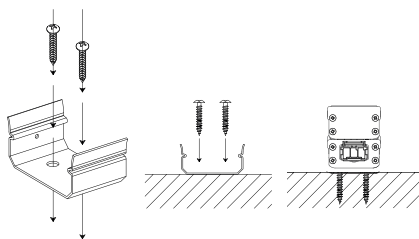


MOUNTING INFORMATION:

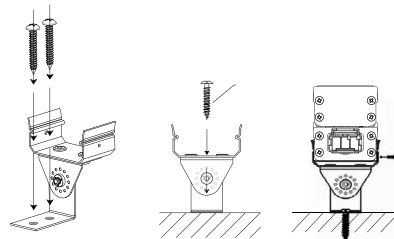
Fixtures 1-2ft, Place clips 0.5" from edge as shown.

Fixtures more than 2ft, Place clips 2" from edges as shown.

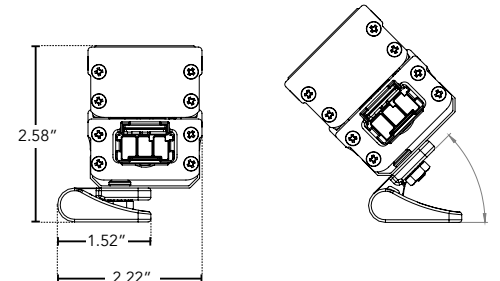
Fixed



Swivel



Hinge

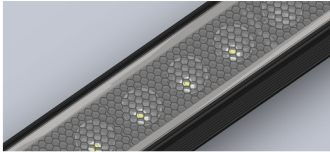


HPNLS-HO Quick Ship

Line Voltage Linear LED Strip Fixture



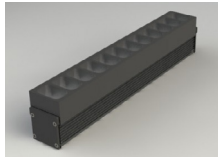
BODY CHOICES:



Hexcell Louver

- Economical solution to off axis glare issues.
- Louver is located flush to secondary optic, preventing unwanted striation.
- Louver cannot be utilized when no optic (120°) is specified.
- Louver is behind lens to ensure no damage is done during installation or after. This also ensures no dust build-up.
- Louver ships pre-fitted making on site fixture installation easy.
- No unsightly clips, screws, or brackets.
- Can be used with other baffles.
- Adds nothing to overall height.
- To specify add "HL" in options box.

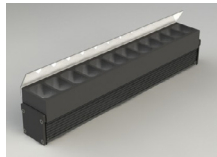
*Additional charges may apply.



SB - Square Baffle



ASYM - Asymmetric Baffle

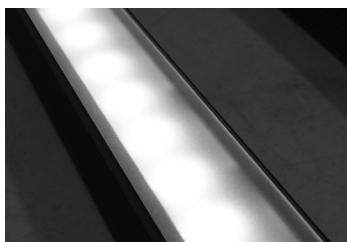


SKB - Sq. Kicker Baffle

- Design cuts off light at 90°
- Baffles are lightweight black PVC with non-reflective surfaces to avoid glare from interior sections.
- One piece baffle slides onto the extruded housing making installation easy.
- SB only adds .75" to overall height
ASYM adds .90" to overall height
SKB adds 1.625" to overall height
- To specify add "SB" or "ASYM" for slanted version or "SKB" for kicker version in options box.

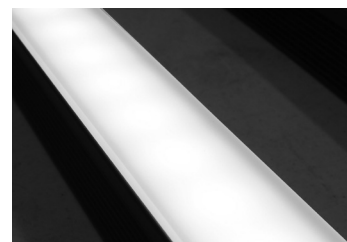
LENS OPTIONS:

*Additional charges apply.



Diffused*

- Interior or exterior use.
- 87% transmission.
- Lens is 1/8" (.09) thick, adds 1/16" to overall height of fixture. Call factory for more information.

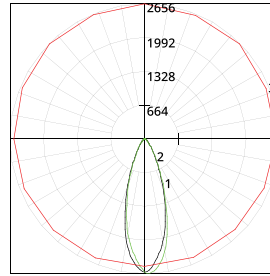


Satin Ice White*

- Interior use only.
- Best for direct view use.
- 42% transmission.
- Lens is 1/4" (.25) thick, adds 1/8" to overall height of fixture. Call factory for more information.

* Not Available With Hexcell or Baffle Options

LUMINAIRE INFORMATION:



- Fixture Type: 3500°K, 24° optic, 120V, 12"
- Total lumen Output: 4840 Lumens per 4ft.
- Luminaire Efficacy: 80.6 Lumens per watt
- Maximum Candela: 2655.83
- Located at Horizontal Angle: 90
- Vertical Angle: 2

- #1 - Vertical Plane Through Horizontal Angles (0 - 180)
- #2 - Vertical Plane Through Horizontal Angles (90 - 270)
- #3 - Horizontal Cone Through Vertical Angle (2) (Through Max. Cd.)

For lux multiply fc by 10.76fc reading taken at 100% capacity (no dimming)

Characteristics:

LUMENS PER LAMP	1203.5 (1 lamp)
TOTAL LAMP LUMENS	1203.5
LUMINAIRE LUMENS	1204
TOTAL LUMINAIRE EFFICIENCY	100%
LUMEN EFFICACY RATING	80
TOTAL LUMINAIRE WATTS	15.02
BALLAST FACTOR	1.00
CIE TYPE	Direct
SPACING CRITERION (0-180)	0.58
SPACING CRITERION (90-270)	0.62
SPACING CRITERION (Diagonal)	0.60
BASIC LUMINOUS SHAPE	Rectangular
LUMINOUS LENGTH (0-180)	0.31m
LUMINOUS WIDTH (90-270)	0.04m
LUMINOUS HEIGHT	0.00m



HPNLS-HO - QuickShip

ORDER GUIDE

Customer:

Date:

PO:

Project:

Distributor:

TYPE	LENGTH 6" Increments	QUANTITY	COLOR OPTION	OPTIC	VOLTAGE	FINISH	LOCATION	MOUNTING	LENS	BODY OPTIONS
			HPNLS	HO			I			QS
			HPNLS	HO			I			QS
			HPNLS	HO			I			QS
			HPNLS	HO			I			QS
			HPNLS	HO			I			QS
			HPNLS	HO			I			QS
			HPNLS	HO			I			QS

Additional Power Feeds/End Caps Needed? Fill In Quantity, Additional Costs May Apply:

Project Notes:

HPNLS-HO Order Terms:

- Lead Time: 10 Business Days After Approvals
- (1) Power feed and (1) Terminator Included per 43 feet
- 2 Clips included per less than 48" and 3 Clips included per on 48" & 96"

Quick Ship Terms:

- Orders Must be Received by 12pm EST
- Quick Ship Fixtures are Interior Use Only.
- Only Lengths of 500 Ft. or Less Can Be Ordered.
- No Custom Modifications are Available, Only the Standard Qualifies.
- Any Delays In Approvals May Void Quick Ship Possibility.
- Errors/Omissions will be Sole Responsibility of Purchaser.
- Additional Costs May Apply.
- Minimum Orders Will Apply.
- Subject to All Standard Approvals.
- All Orders Subject to All Boca Flasher Terms and Conditions.

Boca Flasher, Inc. 508 South Military Trail, Deerfield Beach, Florida 33442 USA Phone: 561.989.5338 Fax: 561.982.8323 © 2020 Boca Flasher, Inc

We are constantly improving our fixtures and reserve the right to change options and specifications. For specific requirements, contact your Boca Flasher sales representative. This product complies with IES LM-79-08 testing procedures and relevant standards. HPNLS-HO meets or exceeds Title 24 Compliance. >45 Lumens per Watt. For additional information and details visit our website at www.bocaflasher.com. All products proudly manufactured in the USA. All rights reserved. All names and trademarks are property of their respective owners.