



# HPNFC-RT

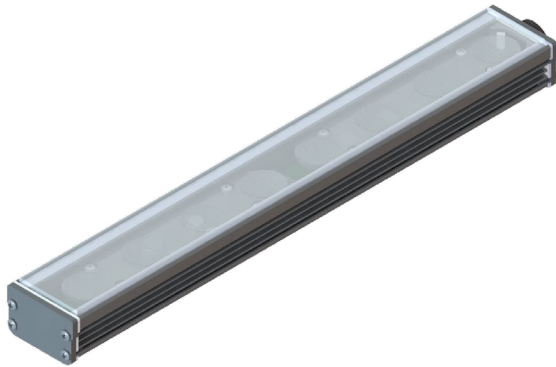
Shallow Profile Linear LED Strip Fixture

Customer:

Date:

Type:

Project:



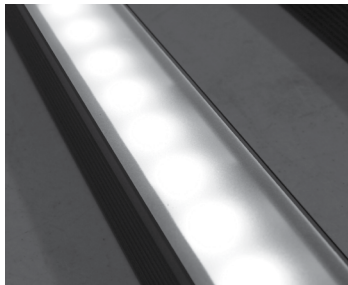
- Compact, variable light fixture for dry, damp or wet location use.
- Fixture comes in 6" increments (12" minimum).
- Many options in optics, color temperature and accessories.
- Four different types of lenses.
- Boca Flasher's patented CleanDim® technology ensures even dimming from 0-100%.
- Uses standard magnetic low voltage dimming.
- Fixture dims with both forward and reverse phase dimming or can use Boca's SDS module for 0-10V DALI or DMX Dimming.
- Robust aluminum housing with a durable finish making it weather and abrasion resistant.
- Contact Boca Flasher for tips with custom installations.
- Total linear foot per power feed: Voltage Dependent Class 2 limited.



## PRODUCT SPECIFICATIONS:

COLOR OPTION		OPTIC	VOLTAGE	FINISH	LOCATION	MOUNTING	LENS	OPTIONS
HPNFC	RT							
	2700K	10°	120V	B Black	I Interior-IP50	F Fixed	C Clear	HL Hexcell Louver
	3000K	30°	277V	A Clear Anodized Aluminum	E Exterior-IP65	S Swivel	D Diffused	SB Square Baffle
	3500K	60°	Fixture is 12-24VAC		W Wet-IP68	H Hinge	SI Satin Ice (Interior Use Only)	ASYM Asymmetric Baffle
	4000K	10°x60°				3Arc 3" Arc Swivel	OP Opal White (Exterior Use Only)	SKB Kicker Baffle
	5000K	30°x60°				6Arc 6" Arc Swivel		HL* Hexcell Louver (Cannot be used with Satin Ice White or 120° optic)
	Amber	120°						
	Red							
	Green							
	Blue							

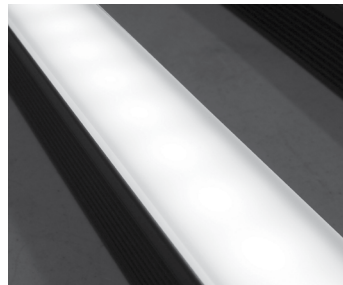
## LENS OPTIONS:



### Diffused\*

- Interior or exterior use.
- 87% transmission.
- Lens is 1/8" (.09) thick, adds 1/16" to overall height of fixture. Call factory for more information.

\*Additional charges apply.



### Satin Ice White\*

- Interior use only.
- Best for direct view use.
- 42% transmission.
- Lens is 1/4" (.25) thick, adds 1/8" to overall height of fixture. Call factory for more information.

\*Additional charges apply.

# HPNFC-RT

Shallow Profile Linear LED Strip Fixture



## TECHNICAL SPECIFICATIONS:

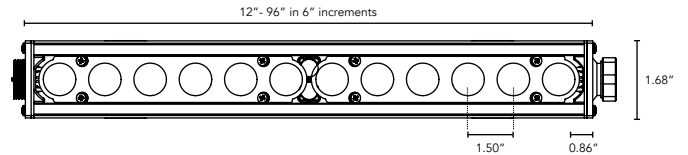
WATTAGE	10 watts per linear ft.
INPUT VOLTAGE	12-48 VAC-SPECIFY
CONTROL	Standard magnetic low voltage dimming
LED SPACING	1.5" on center
LENGTH	12" - 72", 6" increments
TOTAL HEIGHT	1.04" (not including clip)
TOTAL WIDTH	1.68"
COLOR OPTIONS	2700K, 3000K, 3500K, 4000K, 5000K, amber, red, green, blue
MOUNTING	Fixed, swivel, 3" Arc or 6" Arc
AVAILABLE OPTICS	10°, 30°, 60°, 10° x 60°, 30° x 60°, 120°
RATING	IP50, IP65, IP68
COLOR RENDERING INDEX (CRI)	90 + CRI
POWER CABLE	UL Standard 10 ft.
ENVIRONMENTAL	Operating temperature -40°F-140°F Ambient (-40°C-60°C)** Storage temperature -40°F-140°F Ambient indoor fixtures operation limited to <=50% relative humidity

\*\* Military spec available under special request-lead times may be impacted.

## DIMENSIONS:

- For vertical installation please contact the factory for specific mounting instructions.
- For installations above 4' please contact the factory.

Plan View



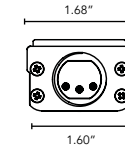
Elevation View



Hinge View

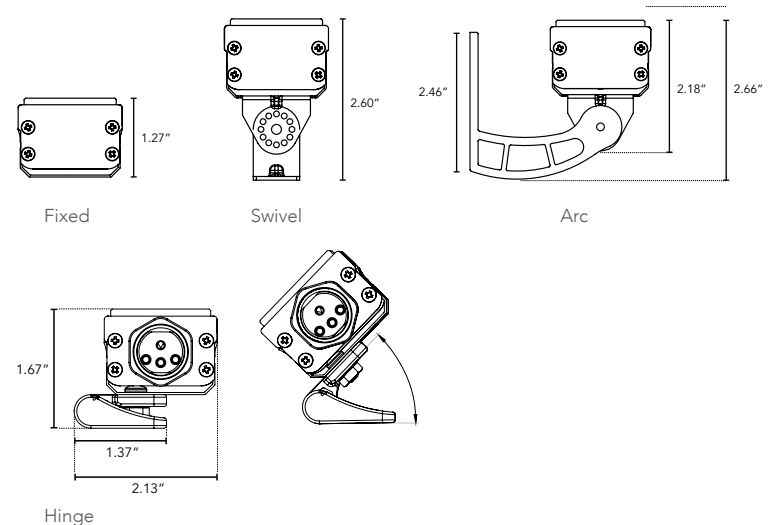


End View



## MOUNTING INFORMATION:

- For vertical installation please contact the factory for specific mounting instructions.

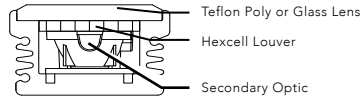
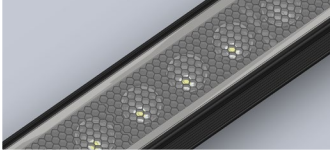


# HPNFC-RT

Shallow Profile Linear LED Strip Fixture



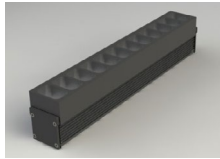
## BODY CHOICES:



### Hexcell Louver

- Economical solution to off axis glare issues.
- Louver is located flush to secondary optic, preventing unwanted striation.
- Louver cannot be utilized when no optic (120°) is specified.
- Louver is behind lens to ensure no damage is done during installation or after. This also ensures no dust build-up.
- Louver ships pre-fitted making on site fixture installation easy.
- No unsightly clips, screws, or brackets.
- Can be used with other baffles.
- Adds nothing to overall height.
- To specify add "HL" in options box.

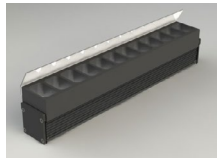
\*Additional charges may apply.



SB - Square Baffle



SSB - Sq. Slanted Baffle



SKB - Sq. Kicker Baffle

### Baffle Square Design

- Design cuts off light at 90°
- Baffles are lightweight black PVC with non-reflective surfaces to avoid glare from interior sections.
- One piece baffle slides onto the extruded housing making installation easy.
- SB only adds .75" to overall height  
SSB adds .90" to overall height  
SKB adds 1.625" to overall height
- To specify add "SB" or "SSB" for slanted version or "SKB" for kicker version in options box.

## LUMINAIRE INFORMATION:

LUMENS PER LAMP -3500K 30X60	936 (1 lamp)
TOTAL LAMP LUMENS	936
LUMINAIRE LUMENS	936
TOTAL LUMINAIRE EFFECIENCY	100%
LUMEN EFFECACY RATING	94
TOTAL LUMINAIRE WATTS	10.02
BALLAST FACTOR	1.00
CIE TYPE	Direct
SPACING CRITERION (0-180)	0.58
SPACING CRITERION (90-270)	0.62
SPACING CRITERION (Diagonal)	0.60
BASIC LUMINOUS SHAPE	Rectangular
LUMINOUS LENGTH (0-180)	0.31m
LUMINOUS WIDTH (90-270)	0.04m
LUMINOUS HEIGHT	0.03m

- HPNFC - 10W
- Specific Files Available On Request