



HPCCS

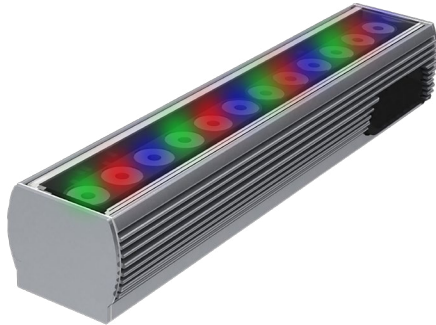
Small Profile Color Changing LED Fixture

Customer:

Date:

Type:

Project:



- Compact, rugged, linear fixture easily integrates into many applications.
- Now available with triple diode RGB boards (not available with optics).
- Many options in optics, color temperature, and accessories.
- Simple installation using conventional wiring.
- Clear lens.
- Wireless DMX controllable.
- Uses any standard DMX 512 show controller.
- Clear anodized aluminum housing with a durable finish making it weather and abrasion resistant.
- UL Listed for dry, damp, or wet location (model dependent).
- Contact Boca Flasher for tips with custom installations.



PRODUCT SPECIFICATIONS:

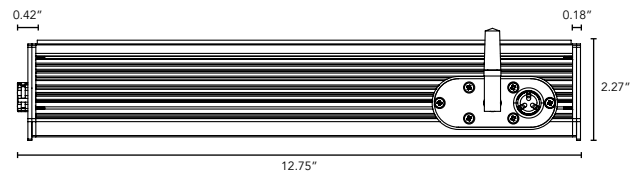
COLOR OPTION	OPTIC	VOLTAGE	FINISH	LOCATION	MOUNTING	LENS	WHITE MIXING OPTIONS
HPCCS			A			C	
RGB	10°	120V	A Clear Anodized Aluminum	I Interior-IP50	F Fixed	C Clear	If specifying WM indicate white options here: (Up to 3 different options can be specified) 2700K 3000K 3500K 4000K 5000K Amber
TRGB Triple Diode (120° only)	30°	277V		E Exterior-IP65	H Hinge		
WM White Color Mixing	60°			W Wet-IP68			
*See White Mix Options	10°x 60°						
	30°x 60°						
	120°						

DIMENSIONS:

Plan View



Elevation View



HPCCS

Small Profile Color Changing LED Fixture



TECHNICAL SPECIFICATIONS:

WATTAGE	16 watts per linear ft.
INPUT VOLTAGE	90-120V 230-277V
CONTROL	Standard DMX 512
LED SPACING	1.0" on center
LENGTH	1 ft., 2 ft., 4 ft.
TOTAL HEIGHT	2.27" (not including clip)
TOTAL WIDTH	2.69"
COLOR OPTIONS	Alternating RGB, Triple Diode RGB, White Mixing
MOUNTING	Fixed or Hinge
AVAILABLE OPTICS	10°, 30°, 60°, 10° x 60°, 30° x 60°, 120°
RATING	IP50, IP65, IP68
COLOR RENDERING INDEX (CRI)	90+ for White Mix Only
POWER CABLE	UL Standard 6.5 ft.
ENVIRONMENTAL	Operating temperature--40°F-140°F Ambient(-40°C-60°C)** Storage temperature -40°F-140°F Ambient indoor fixtures operation limited to =<50% relative humidity

*Custom wattage available upon request.

Title 24 compliant fixture not to exceed 18 watts / 4ft fixture.

** Military spec available under special request-lead times may be impacted.

LIGHTSOURCE REPORT

White w/Clear Glass Lens

CIE Colorimetric Parameters
CCT: Tc = 3088K

Photometric Parameters
Luminous Flux: 634.40 lm
Efficiency: 59.46 lm/W

White w/Clear Glass Lens

RGBW w/Clear Glass Lens
CCT: Tc = 4392K

Photometric Parameters
Luminous Flux: 922.16 lm
Efficiency: 34.65 lm/W

MOUNTING INFORMATION:

- For vertical installation please contact the factory for specific mounting instructions.
- For installations above 4' please contact the factory.

