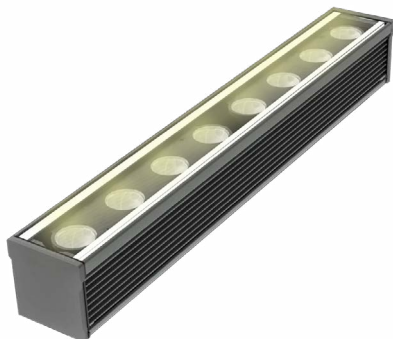


DATE:	TYPE:	PROJECT:	CUSTOMER:



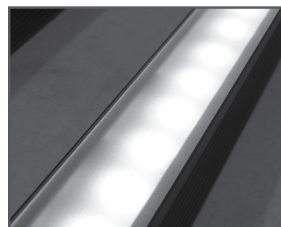
### Low Voltage Linear LED Strip Fixture

The Boca HPNLS-RT is a small profile fixture well suited for many lighting situations where space is a concern. The HPNLS-RT can be fabricated with a range of optics and color temperature choices, affording a multitude of distribution and effect options. The housing is anodized aluminum with a durable finish making it weather and abrasion resistant. It is UL Listed for dry, damp or wet location (model dependent).

### KEY FEATURES:

- Compact, variable light fixture for dry, damp or wet location use.
- Fixture comes in 6" increments (12" minimum).
- Many options in optics, color temperature and accessories.
- Uses standard low voltage dimmers.
- Fixtures are compatible with both forward and reverse phase dimming or can use Boca's SDS module for 0-10V or DMX Dimming.
- Clear anodized aluminum or black finish, check factory for availability.
- Boca's patented CleanDim® technology ensures even dimming from 0-100%.
- Total linear feet per power feed: 6 ft. (class 2 limited)
- Contact Boca Flasher for tips with custom installations.

### LENS OPTIONS:

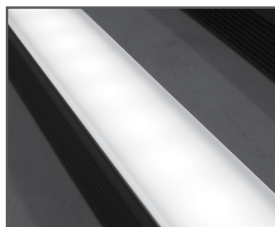


Diffused

#### \*Key Features:

- Interior or exterior use.
- Lens is 1/8" (.09) thick, adds 1/16" to overall height of fixture. Call factory for more information.
- 87% transmission.

\*Additional charges may apply.



Satin Ice White

#### \*Key Features:

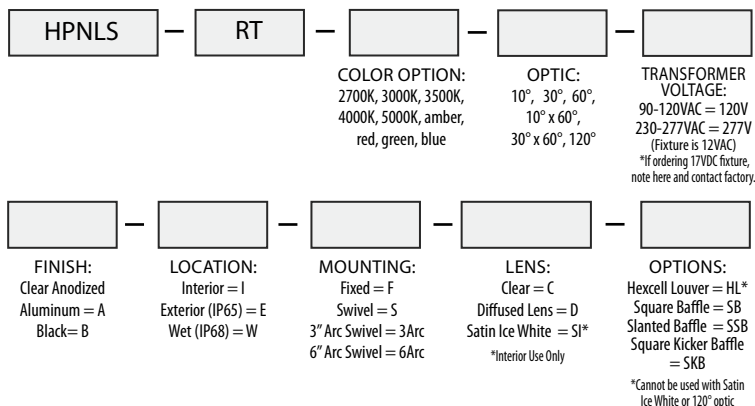
- Interior use only.
- Best for direct view use.
- Lens is 1/4" (.25) thick, adds 1/8" to overall height of fixture. Call factory for more information.
- 42% transmission.
- To specify add "SI" in lens box

\*Additional charges may apply.

### TECHNICAL SPECIFICATIONS:

<b>WATTAGE:</b> 8 watts per linear ft.	<b>TOTAL HEIGHT:</b> Not including clip 1.75"
<b>INPUT VOLTAGE:</b> 24VAC	<b>MOUNTING:</b> Fixed, swivel, 3" arc or 6" arc.
<b>CONTROL:</b> Standard magnetic low voltage dimming.	<b>COLOR OPTIONS:</b> 2700K, 3000K, 3500K, 4000K, 5000K, amber, red, green, blue
<b>POWER CABLE:</b> UL standard 6 ft.	<b>OPTICS AVAILABLE:</b> 10°, 30°, 60°, 10°x60°, 30°x 60°, 120°
<b>LED SPACING:</b> 1.5" on center	<b>RATING:</b> IP50, IP65, IP68
<b>LENGTH:</b> 6" increments, (12" min) allow 1/4" for each end cap and 2" for power feed cable.	<b>COLOR RENDERING INDEX (CRI):</b> 90 + CRI

### PROJECT SPECIFICATIONS:

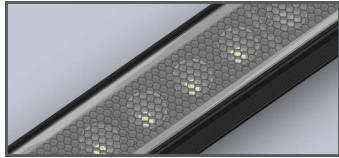


We are constantly improving our fixtures and reserve the right to change options and specifications. For specific requirements, contact your Boca Flasher sales representative. This product complies with IES LM-79-08 testing procedures and relevant standards. HPNLS-RT meets or exceeds Title 24 Compliance. >45 Lumens per Watt. For additional information and details visit our website at [www.bocaflasher.com](http://www.bocaflasher.com). All products proudly manufactured in the USA. Boca Flasher, Inc. 508 South Military Trail, Deerfield Beach, Florida 33442 USA Phone: 561.989.5338 Fax: 561.982.8323 © 2017 Boca Flasher, Inc. All rights reserved. All names and trademarks are property of their respective owners. REV 02-2018



DATE:	TYPE:	PROJECT:	CUSTOMER:

## BAFFLES:



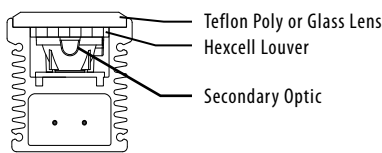
### Hexcell Louver

#### \*Key Features:

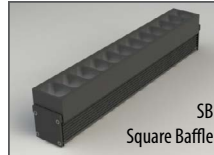
- Economical solution to off axis glare issues.
- Louver is located flush to secondary optic, preventing unwanted striation.
- Louver cannot be utilized when no optic (120°) is specified.
- Louver is behind lens to ensure no damage is done during installation or after. This also ensures no dust build-up.
- Louver ships pre-fitted making on site fixture installation easy.
- No unsightly clips, screws, or brackets.

- Can be used with other baffles.
- Adds nothing to overall height.
- To specify add **"HL"** in options box.

#### Diagram:



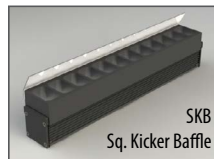
\*Additional charges may apply.



### Baffle Square Design

#### \*Key Features:

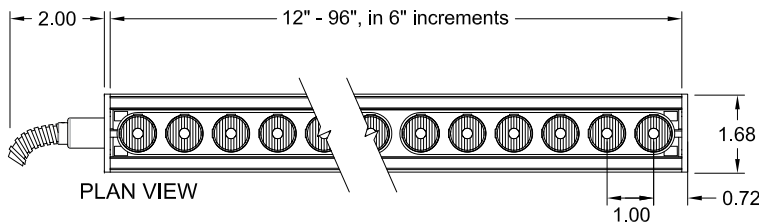
- Design cuts off light at 90°
- Baffles are lightweight black PVC with non-reflective surfaces to avoid glare from interior sections.
- One piece baffle slides onto the extruded housing making installation easy.
- Minimal profile size increases - consult factory for more information.
- SB only adds .75" to overall height
- SSB adds .90" to overall height
- SKB adds 1.625" to overall height
- To specify add **"SB"** or **"SSB"** for slanted version or **"SKB"** for kicker version in options box.



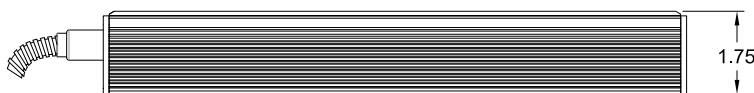
\*Additional charges may apply.

## DIAGRAMS & DIMENSIONS:

### PLAN VIEW

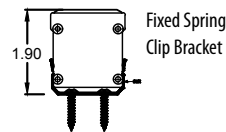


### ELEVATION VIEW

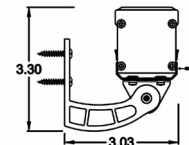
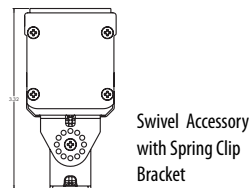


\*Fixture is shown with interior power feed.

## MOUNTING INFORMATION:



Right Angle 3" Arc Bracket with Swivel Accessory



\* For vertical installation please contact the factory for specific mounting instructions.

