

DATE:	TYPE:	PROJECT:	CUSTOMER:



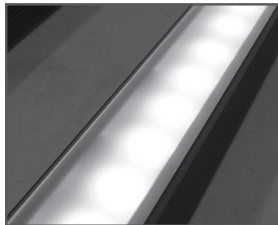
Line Voltage Linear LED Strip Fixture

Dimmable solid color line voltage fixture fabricated with a variety of options. The Boca HPNLS-HO is a high-output fixture well suited for many lighting situations where output is of concern. This line voltage version eliminates the need for secondary transformers, making installation contractor friendly. Boca's CleanDim® technology ensures even dimming from 0-100%. The HPNLS can be fabricated with a range of optics and color temperature choices, affording a multitude of distribution and effect options. The housing is anodized aluminum with a durable finish making it weather and abrasion resistant. It is UL Listed for dry, damp or wet location (model dependent).

KEY FEATURES:

- Compact, variable light fixture for dry, damp or wet location use
- Fixture comes in 6" increments (12" minimum).
- Many options in optics, color temperature and accessories.
- Multiple different types of lenses.
- Uses standard low voltage dimmers.
- Fixtures are compatible with both forward and reverse phase dimming or can use Boca's SDS module for 0-10V or DMX Dimming.
- Clear anodized aluminum or black finish standard.
- Contact Boca Flasher for tips with custom installations.
- Total linear feet per power feed: 40ft @ 120V.

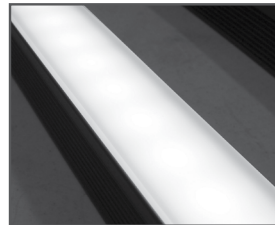
LENS OPTIONS:



Diffused

Key Features:

- Interior or exterior use.
- Lens is 1/8" (.09) thick, adds 1/16" to overall height of fixture. Call factory for more information.
- 87% transmission.
- To specify add "D" in lens box.



Satin Ice White

Key Features:

- Interior use only.
- Best for direct view use.
- Lens is 1/4" (.25) thick, adds 1/8" to overall height of fixture. Call factory for more information.
- 42% transmission.

TECHNICAL SPECIFICATIONS:

WATTAGE: 16 watts per linear ft.	MOUNTING: fixed, swivel, 3" arc or 6" arc
INPUT VOLTAGE: 90-120V, 230-227V	COLOR OPTIONS: 2700K, 3000K, 3500K, 4000K, 5000K, amber, red, green, blue
CONTROL: Leading-edge/Trailing-edge line dimmer 0-10V	OPTICS AVAILABLE: 10°, 30°, 60°, 10°x60°, 30°x60°, 120°
POWER CABLE: UL standard 6 ft.	RATING: IP65, IP68
LED SPACING: 1" on center	COLOR RENDERING INDEX (CRI): 90 + CRI
LENGTH: 12"-96", in 6" increments.	
TOTAL WIDTH: 1.68"	
TOTAL HEIGHT: Not including clip 1.75"	

PROJECT SPECIFICATIONS:

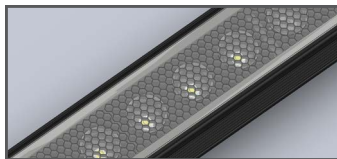
HPNLS	HO			
FINISH: Clear Anodized Aluminum = A Black = B	LOCATION: Interior = I Exterior (IP65) = E Wet (IP68) = W	MOUNTING: Fixed = F Swivel = S 3" Arc Swivel = 3Arc 6" Arc Swivel = 6Arc	COLOR OPTION: 2700K, 3000K, 3500K, 4000K, 5000K, amber, red, green, blue	OPTIC: 10°, 30°, 60°, 10° x 60°, 30° x 60°, 120°
			VOLTAGE: 90-120VAC = 120V 230-277VAC = 277V	OPTIONS: Hexcell Louver = HL* Square Baffle = SB Slanted Baffle = SSB Square Kicker Baffle = SKB
			*Interior Use Only	*Cannot be used with Satin Ice White lens or 120° optic

We are constantly improving our fixtures and reserve the right to change options and specifications. For specific requirements, contact your Boca Flasher sales representative. This product complies with IES LM-79-08 testing procedures and relevant standards. HPNLS-HO meets or exceeds Title 24 Compliance. >45 Lumens per Watt. For additional information and details visit our website at www.bocaflasher.com. All products proudly manufactured in the USA. Boca Flasher, Inc. 508 South Military Trail, Deerfield Beach, Florida 33442 USA Phone: 561.989.5338 Fax: 561.982.8323 © 2017 Boca Flasher, Inc. All rights reserved. All names and trademarks are property of their respective owners. REV 02-2018



DATE: _____ TYPE: _____ PROJECT: _____ CUSTOMER: _____

BAFFLE:

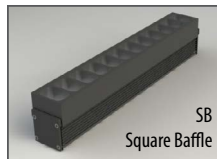
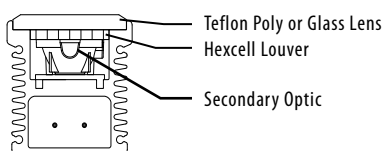


Hexcell Louver

Key Features:

- Economical solution to off axis glare issues.
- Louver is located flush to secondary optic, preventing unwanted striation.
- Louver cannot be utilized when no optic (120°) is specified.
- Louver is behind lens to ensure no damage is done during installation or after. This also ensures no dust build-up.
- Louver ships pre-fitted making on site fixture installation easy.
- No unsightly clips, screws, or brackets.
- Can be used with other baffles.
- Adds nothing to overall height.
- To specify add **"HL"** in options box.

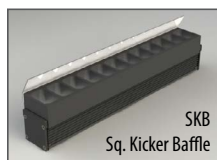
Diagram:



Baffle Square Design

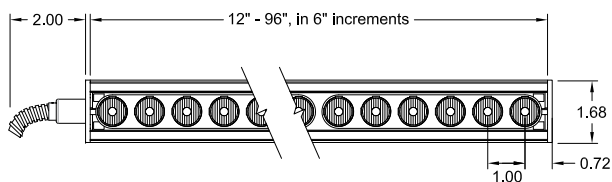
Key Features:

- Design cuts off light at 90°
- Baffles are lightweight black PVC with non-reflective surfaces to avoid glare from interior sections.
- One piece baffle slides onto the extruded housing making installation easy.
- SB only adds .75" to overall height
- SSB adds .90" to overall height
- SKB adds 1.625" to overall height
- To specify add **"SB"** or **"SSB"** for slanted version or **"SKB"** for kicker version in options box.



DIAGRAMS & DIMENSIONS:

PLAN VIEW

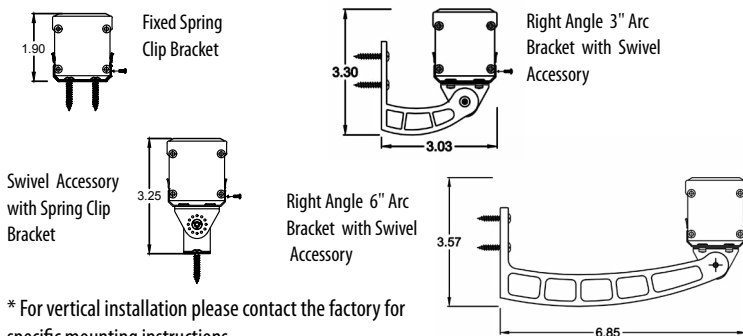


ELEVATION VIEW



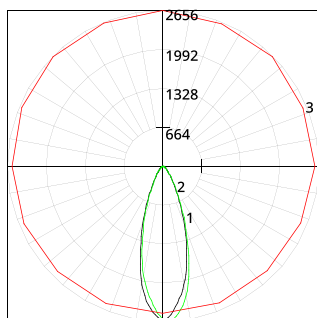
*Fixture is shown with interior power feed.

MOUNTING INFORMATION:



* For vertical installation please contact the factory for specific mounting instructions.

LUMINAIRE INFORMATION:



Candela Distribution

FIXTURE TYPE	3500°K, 30° optic, 120V, 48"
Total lumen Output	4840 Lumens for 4ft.
Luminaire Efficacy	80.6 Lumens per watt
Maximum Candela	2655.83
Located at Horizontal Angle	90
Vertical Angle	2

#1 - Vertical Plane Through Horizontal Angles (0 - 180)
 #2 - Vertical Plane Through Horizontal Angles (90 - 270)
 #3 - Horizontal Cone Through Vertical Angle (2) (Through Max. Cd.)
 For lux multiply fc by 10.76fc reading taken at 100% capacity (no dimming)

Characteristics

Lumens Per Lamp	1203.5 (1 lamp)	Spacing Criterion (0-180)	0.58
Total Lamp Lumens	1203.5	Spacing Criterion (90-270)	0.62
Luminaire Lumens	1204	Spacing Criterion (Diagonal)	0.60
Total Luminaire Efficiency	100%	Basic Luminous Shape	Rectangular
Luminaire Efficacy Rating (LER)	80	Luminous Length (0-180)	0.31m
Total Luminaire Watts	15.02	Luminous Width (90-270)	0.04m
Ballast Factor	1.00	Luminous Height	0.00m
CIE Type	Direct		

We are constantly improving our fixtures and reserve the right to change options and specifications. For specific requirements, contact your Boca Flasher sales representative. This product complies with IES LM-79-08 testing procedures and relevant standards. HPNLS-HO meets or exceeds Title 24 Compliance. >45 Lumens per Watt. For additional information and details visit our website at www.bocaflasher.com. All products proudly manufactured in the USA. Boca Flasher, Inc. 508 South Military Trail, Deerfield Beach, Florida 33442 USA Phone: 561.989.5338 Fax: 561.982.8323 © 2017 Boca Flasher, Inc. All rights reserved. All names and trademarks are property of their respective owners. REV 02-2018

