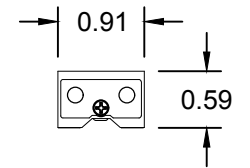
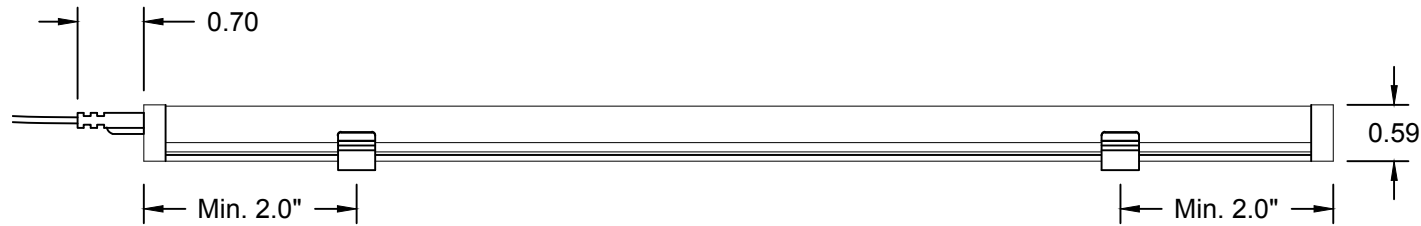


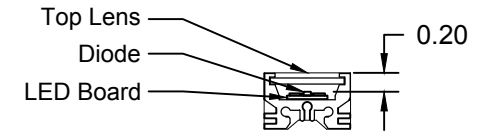
1 PLAN VIEW  
SCALE: 6"=1'-0"



4 END CAP  
SCALE: 6"=1'-0"



2 ELEVATION VIEW  
SCALE: 6"=1'-0"

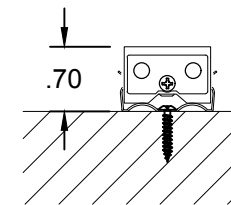


5 SECTION  
SCALE: 6"=1'-0"

### TECHNICAL DATA

Parameter	Data
Power	4 or 8 watts per linear ft.
Input Voltage	24VAC
Input Current per Linear Ft	310mA
Control	Standard Magnetic Low Voltage Dimming
Power Cable Length	UL Standard 6ft
LED Spacing	5/8" on center
Fixture Length	12"-72", in 4" increment
Fixture Width	0.91"
Total Height (not including clip)	0.59"
Mounting	Fixed Clip
Available Optics	120°
Finish Options	Clear Anodized Aluminum
LED Color Options	24K, 27K, 30K, 35K, 40K, 50K
Color Rendering Index	90+ CRI
Ratings	Dry
Total linear ft per 20A breaker	210 ft
Total linear ft per 15A breaker	157 ft
Total linear ft per power feed	12ft
Transformer	Primary 120V or 277V, Secondary 24V

### MOUNTING OPTIONS



FIXED

# BOCA FLASHER

LED Lighting Systems, Technologies & Manufacturing

508 SO. MILITARY TRL. DEERFIELD BEACH, FL 33442  
www.bocafletcher.com (561) 989-5338

THIS DOCUMENT IS CONFIDENTIAL AND PROTECTED BY COPYRIGHTS OF BOCA FLASHER INC.

## NICHE-RT

FILE NAME:	TECHNICAL SHEET	PART #:	NICHE-RT
DRAWN BY:	DEMMLER FILLINGER	04 / 26 / 13	
DESIGN BY:	LUIS ROSADO		
APPROVED BY:	ANGELA TODD		
SCALE:	NTS	SHEET:	1 OF 1