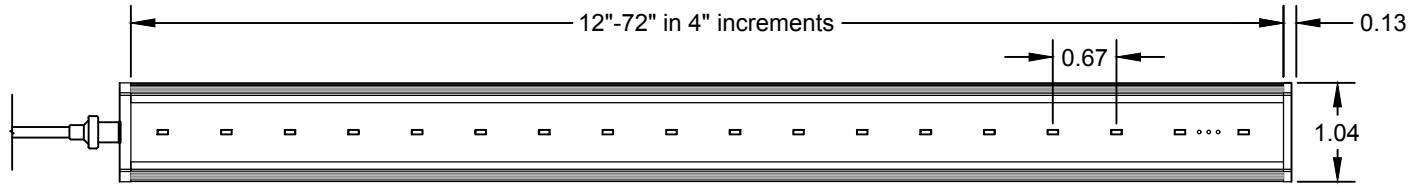
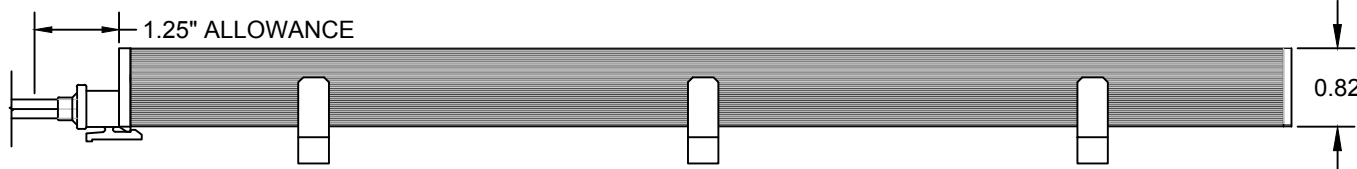


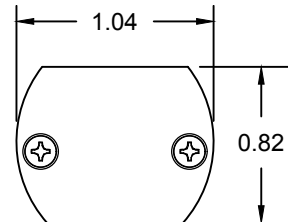
REV	DESCRIPTION	DRAWN BY	DATE
A	10° OPTIC ADDED TO DRAWING	Cedric LOUIS	3/23/16



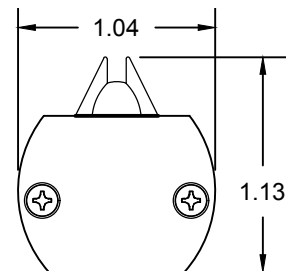
**1 PLAN VIEW**  
SCALE: 6"=1'-0"



**2 ELEVATION VIEW**  
SCALE: 6"=1'-0"

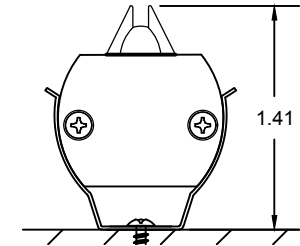
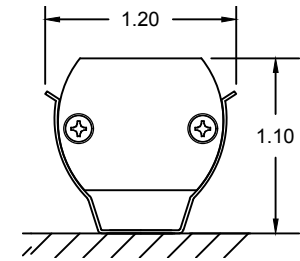


END VIEW 120°

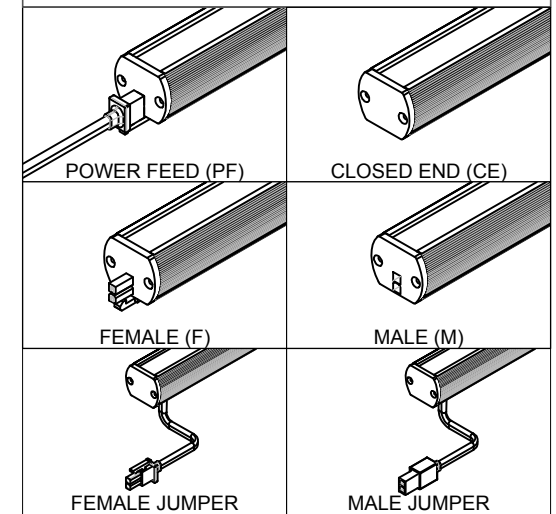


END VIEW 10°

### MOUNTING OPTIONS



### END CAP CONDITIONS



\*Special order color. See your sales rep for more information.

### TECHNICAL DATA

Parameter	Data
Power	6 watts per linear ft.
Input Voltage	90-120V or 230-277V
Input Current per Linear Ft	54mA@120V or 24mA@277V
Control	Leading-edge/Trailing-edge line dimmer
Power Cable Length	UL Standard 6ft
LED Spacing	5/8" on center
Fixture Length	12"-72" in 4" increment
Fixture Width	1.04"
Total Height (not including clip)	0.82"
Mounting	Adjustable Swivel Clip
Available Optics	120°
Finish Options	White or Black high temperature ABS plastic
LED Color Options	2K, 24K, 27K, 3K, 35K, 4K, 5K, 65K
Color Rendering Index	90+ CRI
Ratings	Dry
Total linear ft per 20A breaker	210ft@120V or 470ft@277V
Total linear ft per 15A breaker	156ft@120V or 350ft@277V
Total linear ft per power feed	76ft@120V or 156ft@277V
Transformer	N/A



LED Lighting Systems, Technologies & Manufacturing

508 SO. MILITARY TRL. DEERFIELD BEACH, FL 33442  
www.bocaflasher.com (561) 989-5338

THIS DOCUMENT IS CONFIDENTIAL AND PROTECTED BY COPYRIGHTS OF BOCA FLASHER INC.

## NANOLUME 6W

FILE NAME:	TECHNICAL SHEET	PART #:	BF-NANOLUME
DRAWN BY:	STEPHANIE BURKE		03 / 19 / 15
DESIGN BY:	LUIS ROSADO		04 / 12 / 13
APPROVED BY:	STEPHANIE BURKE		03 / 19 / 15
SCALE:	NTS	SHEET:	1 OF 1