

| | | | |
|-------|-------|----------|-----------|
| DATE: | TYPE: | PROJECT: | CUSTOMER: |
| | | | |



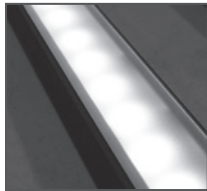
Direct View Linear LED Strip Fixture

Dimmable, low wattage solid color line voltage fixture fabricated with a variety of options. The Boca Lumeline is a shallow profile fixture well suited for direct view applications. This line voltage fixture eliminates the need for secondary transformers, making installation contractor friendly. Boca's patented CleanDim® technology ensures even dimming from 0-100%. The Lumeline can be fabricated with a range of color temperature choices, affording a multitude of distribution and effect options. The housing is anodized aluminum with a durable finish making it weather and abrasion resistant. It is UL Listed for interior, exterior and wet applications (model dependent).

KEY FEATURES:

- Compact, variable light fixture for dry, damp or wet location use.
- Fixture comes in 6" increments (12" minimum).
- Four different types of lenses.
- Uses standard line voltage dimmers.
- Fixtures are compatible with both forward and reverse phase dimming 0-10V, DMX dimmable.
- Clear anodized aluminum or black finish.
- Total linear feet per power feed: 56 ft. @ 120V or 120 ft. @ 277V.

LENS OPTIONS:



Diffused

*Key Features:

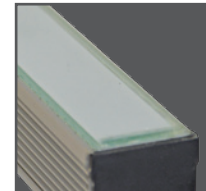
- Interior or exterior use
- Lens is 1/8" (.09) thick, adds 1/16" to overall height.
- To specify add **"D"** in lens box.



Satin Ice White

*Key Features:

- Interior use only.
- Best for direct view use
- Lens is 1/4" (.25) thick, adds 1/8" to overall height.
- To specify add **"SI"** in lens box.



Opal White

*Key Features:

- Exterior use only.
- Best for direct view use
- Lens is 1/4" (.25) thick, adds 1/8" to overall height.
- To specify add **"OW"** in lens box.

*Additional charges may apply.

TECHNICAL SPECIFICATIONS:

| | |
|---|--|
| WATTAGE: 10 watts per linear ft. | TOTAL WIDTH: 1.68" |
| INPUT VOLTAGE: 90-120VAC | TOTAL HEIGHT: Not including clip 1.04" or 1.75" with opal white lens. |
| CONTROL: Leading-edge/Trailing-edge line dimmer, 0-10V | MOUNTING: Fixed, swivel, 3" arc or 6" arc. |
| POWER CABLE: UL standard 6 ft. | COLOR OPTIONS: 2700K, 3000K, 3500K, 4000K, 5000K |
| LED SPACING: 0.66" on center. | OPTICS AVAILABLE: 120° |
| LENGTH: 6" increments (12" max) allow 1/4" for each end cap and 2" for power feed cable. | RATING: IP65, IP68 |
| | COLOR RENDERING INDEX (CRI): 90+ CRI |

PROJECT SPECIFICATIONS:

| | | | | | | |
|---|--|--|---|---|---|--|
| Lumeline | — | — | — | 120° | — | 120V |
| | | WATTAGE: 4 watts= 4W 8watts= 8W | COLOR OPTION: 2700K, 3000K, 3500K, 4000K, 5000K | OPTIC: 120° | | VOLTAGE: 90-120 VAC = 120V |
| FINISH: Clear Anodized Aluminum = A Black = B | LOCATION: Interior = I Exterior (IP65) = E Wet (IP68) = W | MOUNTING: Fixed = F Swivel = S 3" Arc Swivel = 3Arc 6" Arc Swivel = 6Arc | LENS: Clear = C Diffused Lens = D Satin Ice White = SI* Opal White = OW** | OPTIONS: Hexcell Louver = HL* Square Baffle = SB Slanted Baffle = SSB Kicker Baffle = SKB | | |
| | | | *Interior Use Only **Exterior Use Only | | | *Cannot be used with Satin Ice White or 120° optic |

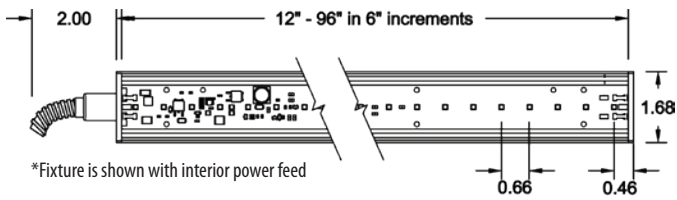
| | | | |
|-------|-------|----------|-----------|
| DATE: | TYPE: | PROJECT: | CUSTOMER: |
| | | | |

DIAGRAMS & DIMENSIONS | MOUNTING INFORMATION:

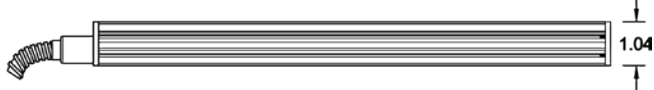
BODY CHOICES | Power feed dependent

STANDARD END FEED

PLAN VIEW



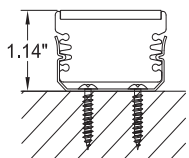
ELEVATION VIEW



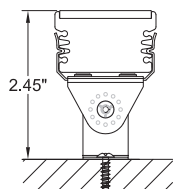
END VIEW

MOUNTING OPTION

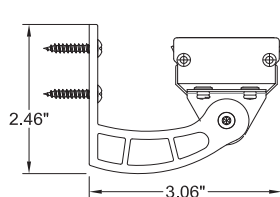
Fixed Spring Clip Bracket



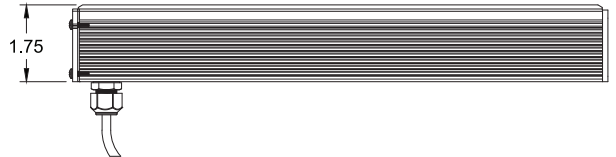
Swivel Accessory with Spring Clip Bracket



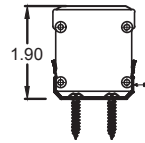
Right Angle 3" Arc Bracket with Swivel Accessory or 6" Arc Bracket with Swivel



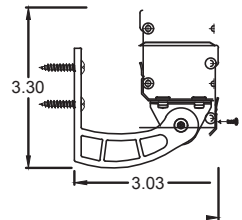
BOTTOM FEED*



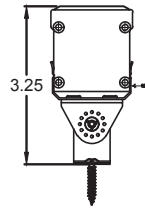
Fixed Spring Clip Bracket



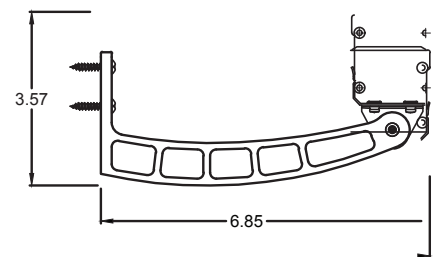
Right Angle 3" Arc Bracket with Swivel Accessory



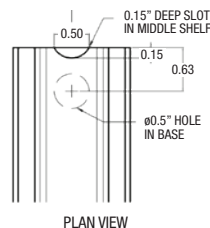
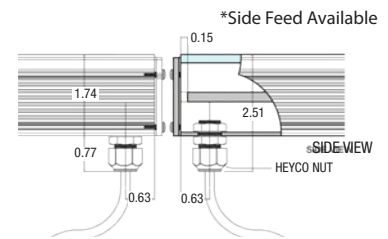
Swivel Accessory with Spring Clip Bracket



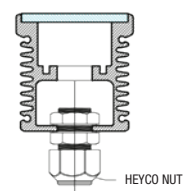
Right Angle 6" Arc Bracket with Swivel Accessory



Bottom Power feed - Side View



END VIEW



* For vertical installation please contact the factory for specific mounting instructions.

* For installations above 4' please contact the factory.