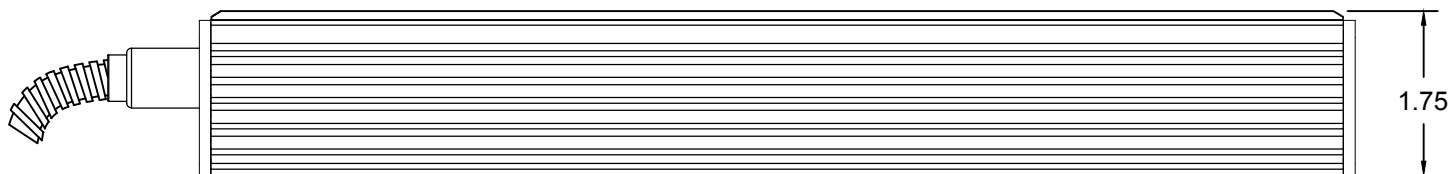
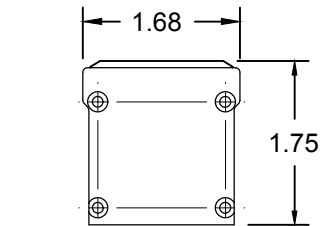


1 PLAN VIEW
SCALE: 6"=1'-0"

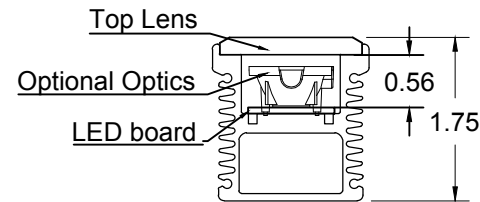


2 ELEVATION VIEW
SCALE: 6"=1'-0"

Diodes located in center of each optic

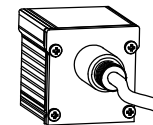


3 END CAP
SCALE: 6"=1'-0"

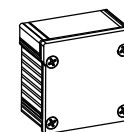


4 SECTION
SCALE: 6"=1'-0"

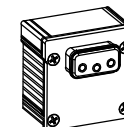
END CAP CONDITIONS



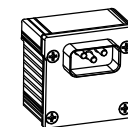
POWER FEED (PF)



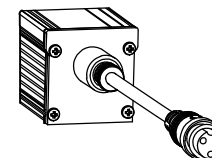
CLOSED END (CE)



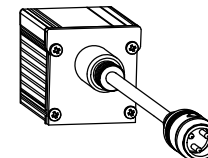
FEMALE (F)



MALE (M)

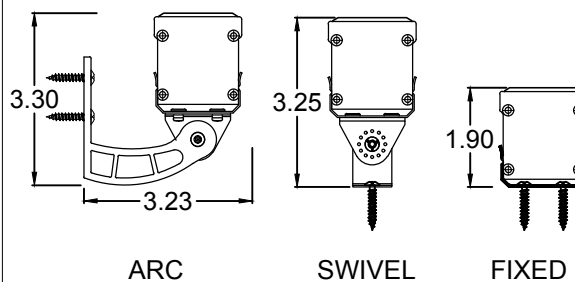


TWIST LOCK FEMALE (TL)



TWIST LOCK MALE (TL)

MOUNTING OPTIONS



ARC

SWIVEL

FIXED

TECHNICAL DATA

Parameter	Data
Power	10 watts per linear ft.
Input Voltage	90-120V or 230-277V
Input Current per Linear Ft	88mA@120V or 40mA@277V
Control	Leading-edge/Trailing-edge line dimmer
Power Cable Length	UL Standard 6ft
LED Spacing	1.5" on center
Fixture Length	12"-96", in 6" increment
Fixture Width	1.68"
Total Height (not including clip)	1.75"
Mounting	Fixed, Swivel, 3" Arc Bracket & 6" Arc Bracket
Available Optics	10°, 30°, 60°, 10°x60°, 30°x60°, 120°
Finish Options	Clear or Black Anodized Aluminum
LED Color Options	27K,3K,35K,4K,5K,Amber,Red,Green,Blue
Color Rendering Index	90+ CRI
Ratings	Dry, IP65, IP68
Total linear ft per 20A breaker	128ft@120V or 280ft@277V
Total linear ft per 15A breaker:	96ft@120V or 210ft@277V
Total linear ft per power feed	56ft@120V or 120ft@277V
Transformer	N/A

BOCA FLASHER

LED Lighting Systems, Technologies & Manufacturing

508 SO. MILITARY TRL. DEERFIELD BEACH, FL 33442
www.bocafasher.com (561) 989-5338

THIS DOCUMENT IS CONFIDENTIAL AND PROTECTED BY COPYRIGHTS OF BOCA FLASHER INC.

HPNLS - Lo8

FILE NAME:	TECHNICAL SHEET	PART #:	HPNLS-Lo8
DRAWN BY:	ANGELA TODD		02 / 17 / 15
DESIGN BY:	LUIS ROSADO		
APPROVED BY:	STEPHANIE BURKE		02 / 17 / 15
SCALE:	NTS	SHEET:	1 OF 1