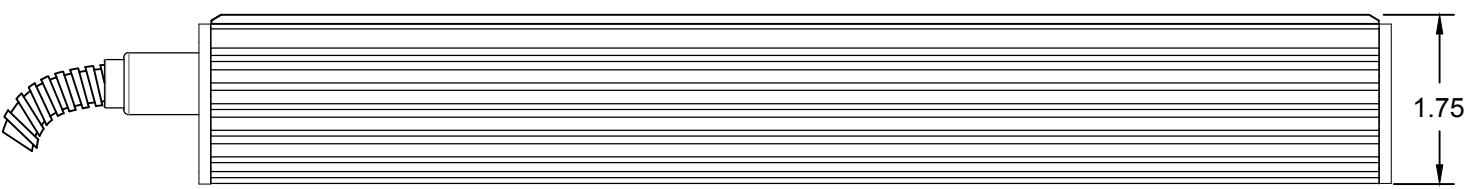
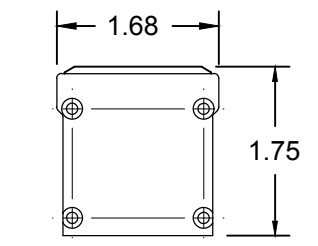


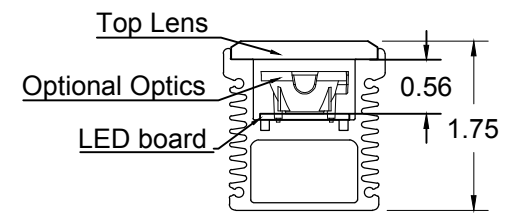
**1 PLAN VIEW**  
SCALE: 6"=1'-0"



**2 ELEVATION VIEW**  
SCALE: 6"=1'-0"

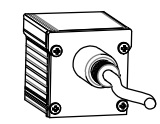


**3 END CAP**  
SCALE: 6"=1'-0"

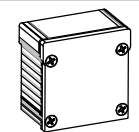


**4 SECTION**  
SCALE: 6"=1'-0"

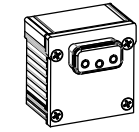
**END CAP CONDITIONS**



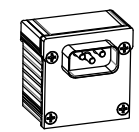
POWER FEED (PF)



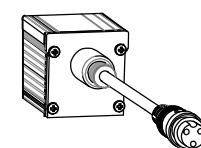
CLOSED END (CE)



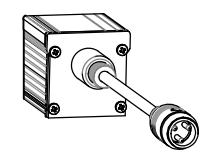
FEMALE (F)



MALE (M)

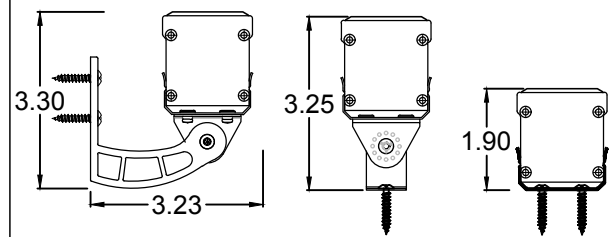


TWIST LOCK FEMALE (TL)



TWIST LOCK MALE (TL)

**MOUNTING OPTIONS**



ARC

SWIVEL

FIXED

**TECHNICAL DATA**

Parameter	Data
Power	8 watts per linear ft.
Input Voltage	90-120V or 230-277V
Input Current per Linear Ft	72mA@120V or 34mA@277V
Control	Leading-edge/Trailing-edge line dimmer
Power Cable Length	UL Standard 6ft
LED Spacing	2" on center
Fixture Length	12"-96", in 6" increment
Fixture Width	1.68"
Total Height (not including clip)	1.75"
Mounting	Fixed, Swivel, 3" Arc Bracket & 6" Arc Bracket
Available Optics	10°, 30°, 60°, 10°x60°, 30°x60°, 120°
Finish Options	Clear or Black Anodized Aluminum
LED Color Options	27K,3K,35K,4K,5K,Amber,Red,Green,Blue
Color Rendering Index	90+ CRI
Ratings	Dry, IP65, IP68
Total linear ft per 20A breaker	150ft@120V or 330ft@277V
Total linear ft per 15A breaker:	112ft@120V or 240ft@277V
Total linear ft per power feed	70ft@120V or 144ft@277V
Transformer	N/A



LED Lighting Systems, Technologies & Manufacturing

508 SO. MILITARY TRL. DEERFIELD BEACH, FL 33442  
www.bocafasher.com (561) 989-5338

THIS DOCUMENT IS CONFIDENTIAL AND PROTECTED BY COPYRIGHTS OF BOCA FLASHER INC.

**HPNLS - Lo6**

FILE NAME:	TECHNICAL SHEET	PART #:	HPNLS-Lo6
DRAWN BY:	ANGELA TODD		02 / 17 / 15
DESIGN BY:	LUIS ROSADO		
APPROVED BY:	STEPHANIE BURKE		02 / 17 / 15
SCALE:	NTS	SHEET:	1 OF 1