

DATE:	TYPE:	PROJECT:	CUSTOMER:



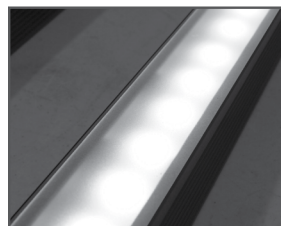
## Line Voltage Linear LED Strip Fixture

Dimmable solid color line voltage fixture fabricated with a variety of options. The Boca HPNLS-LO is a small profile fixture well suited for many lighting situations where both space and locating transformers are concerns. This line voltage version eliminates the need for secondary transformers, making installation contractor friendly. Boca's CleanDim® technology ensures even dimming from 0-100%. The HPNLS-LO can be fabricated with a range of optics and color temperature choices, affording a multitude of distribution and effect options. The housing is anodized aluminum with a durable finish making it weather and abrasion resistant. It is UL Listed for dry, steam, damp or wet locations (model dependent).

### KEY FEATURES:

- Compact, variable light fixture for dry, damp or wet location use
- Fixture comes in 6" increments (12" minimum).
- Many options in optics, color temperature and accessories.
- Three different types of lenses.
- Uses standard low voltage dimmers.
- Fixtures are compatible with both forward and reverse phase dimming or can use Boca's SDS module for 0-10V or DMX Dimming.
- Clear anodized aluminum or black finish, check factory for availability.
- Contact Boca Flasher for tips with custom installations.
- Total linear feet per 20A breaker: 150 ft. @ 120V or 330 ft. @ 277V (LO6), 128 ft. @ 120V or 280 ft. @ 277V (Lo8).
- Total linear feet per 15A breaker: 112 ft. @ 120V or 240 ft. @ 277V (LO6), 96 ft. @ 120V or 210 ft. @ 277V (LO8).

### LENS OPTIONS:

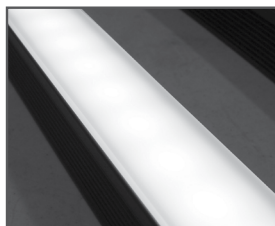


Diffused\*

#### Key Features:

- Interior or exterior use.
- Lens is 1/8" (.09) thick, adds 1/16" to overall height of fixture. Call factory for more information.
- 87% transmission.
- To specify add "D" in lens box.

\*Additional charges apply.



Satin Ice White\*

#### Key Features:

- Interior use only.
- Best for direct view use.
- Lens is 1/4" (.25) thick, adds 1/8" to overall height of fixture. Call factory for more information.
- 42% transmission.
- To specify add "SI" in lens box.

\*Additional charges apply.

### TECHNICAL SPECIFICATIONS:

<b>WATTAGE:</b> 8 or 10 watts per linear ft.	<b>TOTAL HEIGHT:</b> Not including clip 1.75"
<b>INPUT VOLTAGE:</b> 90-120VAC or 230-277 VAC	<b>MOUNTING:</b> Fixed, swivel, 3" arc or 6" arc
<b>CONTROL:</b> Leading-edge/Trailing-edge line dimming, 0-10V, DMX*	<b>COLOR OPTIONS:</b> 2700K, 3000K, 3500K, 4000K, 5000K, amber, red, green, blue.
<b>POWER CABLE:</b> UL standard 6 ft.	<b>OPTICS AVAILABLE:</b> 10°, 30°, 60°, 10°x60°, 30°x60°, 120°
<b>LED SPACING:</b> 2" on center for Lo6 1.5" on center for Lo8	<b>RATING:</b> IP50, IP65, IP68
<b>LENGTH:</b> 12"-96", in 6" increments.	<b>COLOR RENDERING INDEX (CRI):</b> 90 + CRI
<b>TOTAL WIDTH:</b> 1.68"	

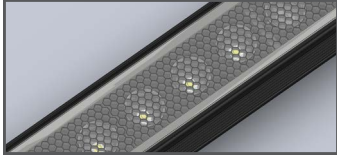
\*Use Boca SDS module for 0-10V or DMX Dimming.

### PROJECT SPECIFICATIONS:

<b>HPNLS</b>	—	—	—	—	—
		<b>WATTAGE:</b> Lo6 = 6 LEDs (8 watts a Lft) Lo8 = 8 LEDs (10 watts a Lft)	<b>COLOR OPTION:</b> 2700K, 3000K, 3500K, 4000K, 5000K, amber, red, green, blue	<b>OPTIC:</b> 10°, 30°, 60°, 10° x 60°, 30° x 60°, 120°	<b>VOLTAGE:</b> 90-120VAC = 120V 230-277VAC = 277V
<b>FINISH:</b> Clear Anodized Aluminum = A Black = B	<b>LOCATION:</b> Interior = I Exterior (IP65) = E Wet (IP68) = W	<b>MOUNTING:</b> Fixed = F Swivel = S 3" Arc Swivel = 3Arc 6" Arc Swivel = 6Arc	<b>LENS:</b> Clear = C Diffused Lens = D Satin Ice White = SI* *Interior Use Only	<b>OPTIONS:</b> Hexcell Louver = HL* Square Baffle = SB Slanted Baffle = SSB Square Kicker Baffle = SKB *Cannot be used with Satin Ice White	

DATE:	TYPE:	PROJECT:	CUSTOMER:

## BAFFLE:



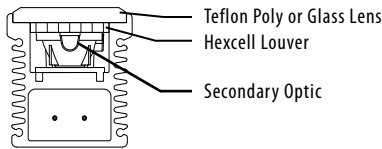
### Hexcell Louver

#### Key Features:

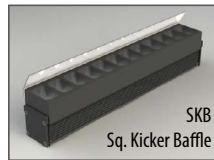
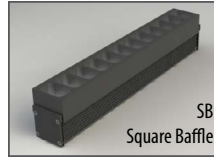
- Economical solution to off axis glare issues.
- Louver is located flush to secondary optic, preventing unwanted striation.
- Louver cannot be utilized when no optic (120°) is specified.
- Louver is behind lens to ensure no damage is done during installation or after. This also ensures no dust build-up.
- Louver ships pre-fitted making on site fixture installation easy.

- No unsightly clips, screws, or brackets.
- Can be used with other baffles.
- Adds nothing to overall height.
- To specify add **"HL"** in options box.

#### Diagram:



\*Additional charges may apply.



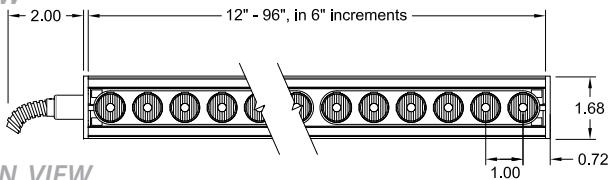
### Baffle Square Design

#### Key Features:

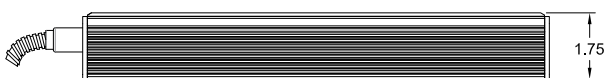
- Design cuts off light at 90°
- Baffles are lightweight black PVC with non-reflective surfaces to avoid glare from interior sections.
- One piece baffle slides onto the extruded housing making installation easy.
- Minimal profile size increases - consult factory for more information.
- SB only adds .75" to overall height  
SSB adds .90" to overall height  
SKB adds 1.625" to overall height
- To specify add **"SB"** or **"SSB"** for slanted version or **"SKB"** for kicker version in options box.

## DIAGRAMS & DIMENSIONS:

#### PLAN VIEW

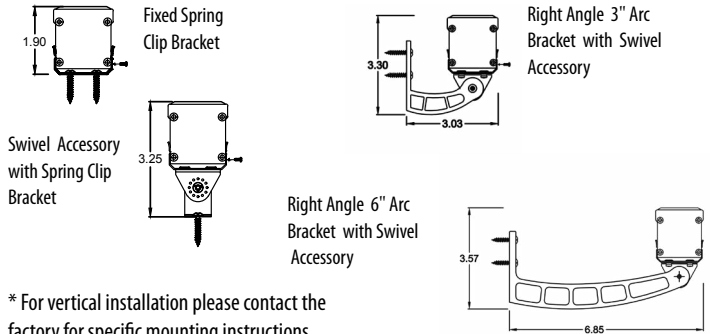


#### ELEVATION VIEW



\*Fixture is shown with interior power feed

## MOUNTING INFORMATION:

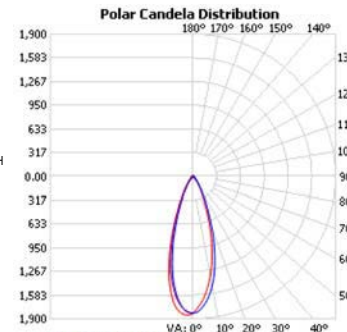


\* For vertical installation please contact the factory for specific mounting instructions.

## LUMINAIRE INFORMATION:

#### Candela Distribution

- - Max Cd: 247.5" H
- - 0° H
- - 90° H



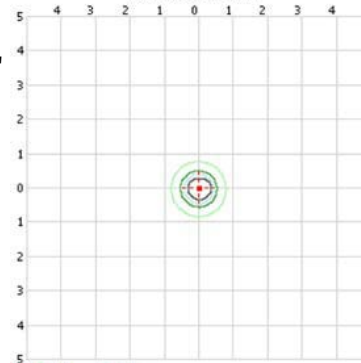
**FIXTURE TYPE:**  
3500°K, 30° optic, 120V, 12"

**Total Lumen Output:**  
784 Lumens per ft.

**Luminaire Efficacy:**  
77 Lumens per watt

For lux multiply fc by 10.76  
fc reading taken at 100% capacity  
(no dimming)

#### Isofootcandle Plot



- 20fc
- 10fc
- 5fc
- 1fc
- 0.5fc
- 0.1fc
- 50% Max Cd
- Distance in units of mount height (20ft)
- ..... Max Cd

We are constantly improving our fixtures and reserve the right to change options and specifications. For specific requirements, contact your Boca Flasher sales representative. This product complies with IES LM-79-08 testing procedures and relevant standards. HPNLS-LO meets or exceeds Title 24 Compliance. >45 Lumens per Watt. For additional information and details visit our website at [www.bocaflasher.com](http://www.bocaflasher.com). All products proudly manufactured in the USA. Boca Flasher, Inc. 508 South Military Trail, Deerfield Beach, Florida 33442 USA Phone: 561.989.5338 Fax: 561.982.8323 © 2017 Boca Flasher, Inc. All rights reserved. All names and trademarks are property of their respective owners. REV 06-2017

