



HPNLS-RT

Low Voltage Linear LED Strip Fixture

Customer:

Date:

Type:

Project:



- Compact, variable light fixture for dry, damp or wet location use
- Fixture comes in 6" increments (12" minimum).
- Many options in optics, color temperature and accessories.
- Uses standard low voltage transformers.
- Boca Flasher's patented CleanDim® technology ensures even dimming from 0-100%.
- Fixtures are compatible with both forward and reverse phase dimming or can use Boca's SDS module for 0-10V DALI or DMX Dimming.
- Powder coat housing with a durable finish making it weather and abrasion resistant.
- Total linear feet per power feed: voltage dependent (class 2 limited)
- Contact Boca Flasher for tips with custom installations.



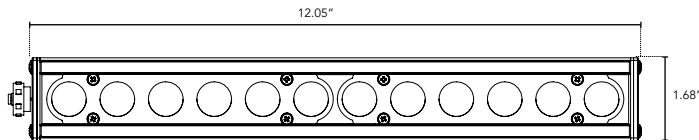
PRODUCT SPECIFICATIONS:

COLOR OPTION		OPTIC	VOLTAGE	FINISH	LOCATION	MOUNTING	LENS	OPTIONS
HPNLS	RT							
2700K		10°	120V	W White	I Interior-IP50	F Fixed	C Clear	SB Square Baffle
3000K		30°	277V	B Black	E Exterior-IP65	S Swivel	D Diffused	ASYM Asymmetric Baffle
3500K		60°	Fixture is 12-48VAC	G Gray	W Wet-IP68	3Arc 3" Arc Swivel	SI Satin Ice (Interior Use Only)	SKB Kicker Baffle
4000K		10°x60°	*If ordering 17VDC fixture, note here and contact factory			6Arc 6" Arc Swivel	OW Opal White (Exterior Use Only)	HL Hexcell Louver (Cannot be used with Satin Ice White or 120° optic)
5000K		30°x60°				V Vandal Resistant		
Amber		120°						
Red								
Green								
Blue								

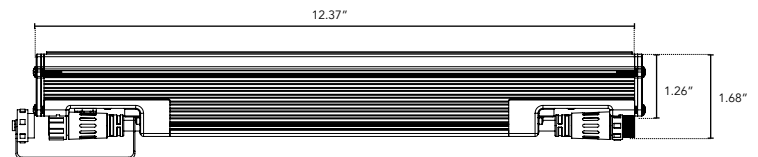
DIMENSIONS:

- For vertical installation please contact the factory for specific mounting instructions.
- For installations above 4' please contact the factory.

Plan View



Elevation View



HPNLS-RT

Line Voltage Linear LED Strip Fixture

TECHNICAL SPECIFICATIONS:

WATTAGE	8 watts per linear ft.
INPUT VOLTAGE	12-48 VAC
CONTROL	Standard magnetic low voltage dimming - AC only
LED SPACING	1.5" on center
LENGTH	6" increments, (12" min) allow 1/4" for each end cap and 2" for power feed cable
TOTAL HEIGHT	1.75" (not including clip)
TOTAL WIDTH	1.68"
COLOR OPTIONS	2700K, 3000K, 3500K, 4000K, 5000K, Amber, Red, Green, Blue
MOUNTING	Fixed, Swivel, 3" Arc or 6" Arc
AVAILABLE OPTICS	10°, 30°, 60°, 10° x 60°, 30° x 60°, 120°
RATING	IP50, IP65, IP68
COLOR RENDERING INDEX (CRI)	90 + CRI
POWER CABLE	UL Standard 10 ft.
ENVIRONMENTAL	Operating temperature--40°F-140°F Ambient(-40°C-60°C)** Storage temperature -40°F-140°F Ambient indoor fixtures operation limited to =<50% relative humidity

** Military spec available under special request-lead times may be impacted.

LENS OPTIONS:

Diffused*

- 87% transmission.
- Lens is 1/8" (.09) thick, adds 1/16" to overall height of fixture. Call factory for more information.

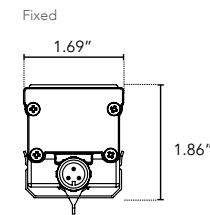
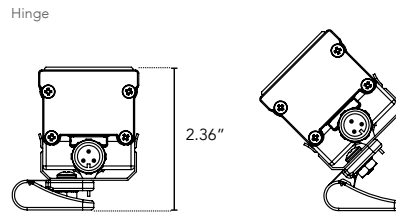
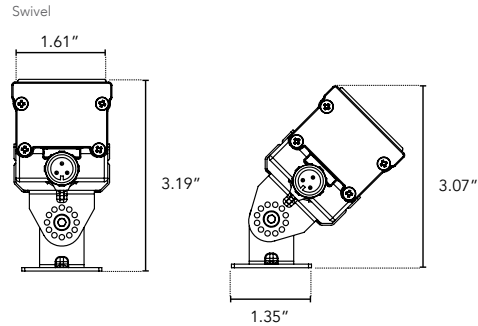
Satin Ice White*

- Best for direct view use.
- 42% transmission.
- Lens is 1/4" (.25) thick, adds 1/8" to overall height of fixture. Call factory for more information.

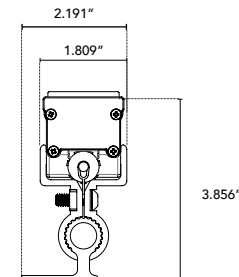
*Additional charges apply.

MOUNTING INFORMATION:

- Fixtures 1-2ft, Place clips 3" from edge as shown.
- Fixtures more than 2ft, Place clips 3.5" from edges as shown.



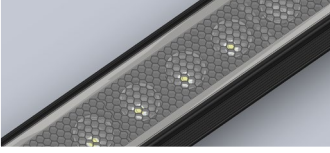
Vandal Resistant



HPNLS-RT

Line Voltage Linear LED Strip Fixture

BODY CHOICES:



Hexcell Louver

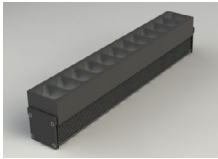
- Economical solution to off axis glare issues.
- Louver is located flush to secondary optic, preventing unwanted striation.
- Louver cannot be utilized when no optic (120°) is specified.
- Louver is behind lens to ensure no damage is done during installation or after. This also ensures no dust build-up.
- Louver ships pre-fitted making on site fixture installation easy.
- No unsightly clips, screws, or brackets.
- Can be used with other baffles.
- Adds nothing to overall height.
- To specify add "HL" in options box.

*Additional charges may apply.

LUMINAIRE INFORMATION:

IES Files Pending

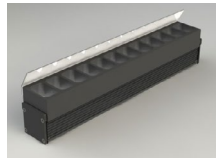
- Specific Files Available On Request



SB - Square Baffle



SSB - Sq. Slanted Baffle



SKB - Sq. Kicker Baffle

Baffle Square Design

- Design cuts off light at 90°
- Baffles are lightweight black PVC with non-reflective surfaces to avoid glare from interior sections.
- One piece baffle slides onto the extruded housing making installation easy.
- SB only adds .75" to overall height
SSB adds .90" to overall height
SKB adds 1.625" to overall height
- To specify add "SB" or "SSB" for slanted version or "SKB" for kicker version in options box.