



HPNLS-HO-WD

Line Voltage Linear LED Strip
Fixture with Warm Dim

Customer:

Date:

Type:

Project:



- Compact, variable light fixture for dry, damp or wet location use.
- Fixture comes in 6" increments (12" minimum).
- Standard range shifts the color temperature from 3000K to 2000K as the fixture is dimmed.
- Designer selectable color ranges to suit a variety of projects, call factory for additional options.
- Boca Flasher's patented CleanDim® technology ensures even dimming from 0-100%.
- Uses standard line voltage dimmers.
- Fixtures are compatible with both forward and reverse phase dimming or can use Boca's SDS module for 0-10V, Dali or DMX Dimming.
- Total linear feet per power feed: 40ft @ 120V (16W Version).
- Contact Boca Flasher for tips with custom installations.



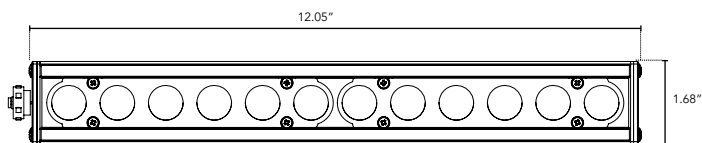
PRODUCT SPECIFICATIONS:

	WATTAGE	COLOR OPTION	OPTIC	VOLTAGE	FINISH	LOCATION	MOUNTING
HPNLS-HO-WD	8W 16W	Low End Warm Dim 2000K-3000K <small>*Standard Option - Select None for High End</small> High End Warm Dim Custom CCT: <small>*Select a CCT for both Low End and High End</small> 2700K 3500K 5000K 3000K 4000K	10° 30° 60° 10°x60° 30°x60° 120°	120V 277V	W White B Black G Gray	I Interior-IP60 W Wet-IP68	F Fixed S Swivel H Hinge 3Arc 3" Arc Swivel 6Arc 6" Arc Swivel
	LENS	BODY OPTIONS					
	C Clear D Diffused SI Satin Ice <small>(Interior Use Only)</small> OP Opal White	SB Square Baffle ASYM Asymmetric Baffle SKB Kicker Baffle HL* Hexcell Louver <small>(Cannot be used with Satin Ice White or 120° optic)</small>					

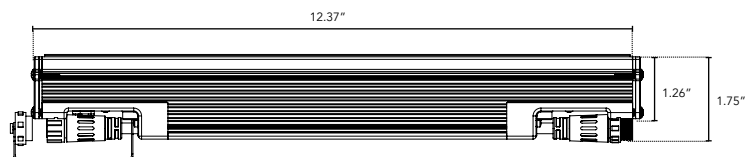
DIMENSIONS:

- For vertical installation please contact the factory for specific mounting instructions.
- For installations above 4' please contact the factory.

Plan View



Elevation View



HPNLS-HO-WD

Line Voltage Linear LED Strip Fixture with Warm Dim

TECHNICAL SPECIFICATIONS:

WATTAGE	8W or 16W per linear ft.
INPUT VOLTAGE	90-120V 230-277V
CONTROL	Leading Edge/Trailing Edge Line Dimmer, 0-10V, DALI, DMX*
LED SPACING	1" on center
LENGTH	12" - 96", 6" increments
TOTAL HEIGHT	1.75" (not including clip)
TOTAL WIDTH	1.68"
COLOR OPTIONS	2700K, 3000K, 3500K, 4000K, 5000K
MOUNTING	Fixed, Swivel, Hinge, 3" Arc, or 6" Arc
AVAILABLE OPTICS	10°, 30°, 60°, 10° x 60°, 30° x 60°, 120°
RATING	IP50, IP68
COLOR RENDERING INDEX (CRI)	90 + CRI
POWER CABLE	UL Standard 10 ft.
ENVIRONMENTAL	Operating temperature -40°F-140°F Ambient (-40°C-60°C)** Storage temperature -40°F-140°F Ambient indoor fixtures operation limited to <=50% relative humidity

*Uses Boca SDS Module for 0-10V, Dali, or DMX Dimming.

** Military spec available under special request-lead times may be impacted.

LENS OPTIONS:

Diffused*

- 87% transmission.
- Lens is 1/8" (.09) thick, adds 1/16" to overall height of fixture.
Call factory for more information.

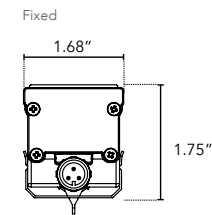
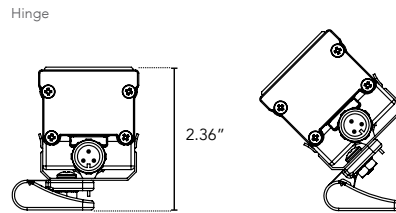
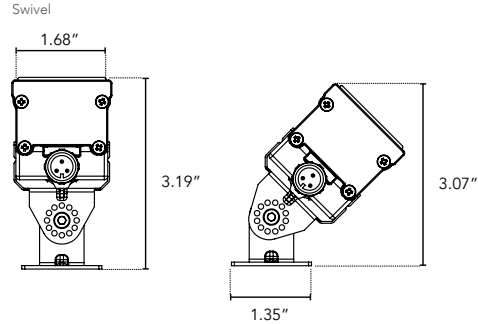
Satin Ice White*

- Best for direct view use.
- 42% transmission.
- Lens is 1/4" (.25) thick, adds 1/8" to overall height of fixture.
Call factory for more information.

*Additional charges apply.

MOUNTING INFORMATION:

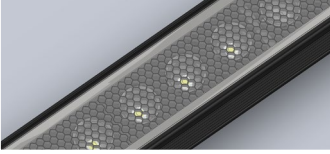
- Fixtures 1-2ft, Place clips 3" from edge as shown.
- Fixtures more than 2ft, Place clips 3.5" from edges as shown.



HPNLS-HO-WD

Line Voltage Linear LED Strip Fixture with Warm Dim

BODY CHOICES:



Hexcell Louver

- Economical solution to off axis glare issues.
- Louver is located flush to secondary optic, preventing unwanted striation.
- Louver cannot be utilized when no optic (120°) is specified.
- Louver is behind lens to ensure no damage is done during installation or after. This also ensures no dust build-up.
- Louver ships pre-fitted making on site fixture installation easy.
- No unsightly clips, screws, or brackets.
- Can be used with other baffles.
- Adds nothing to overall height.
- To specify add "HL" in options box.

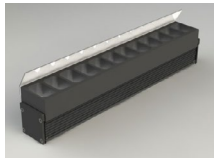
*Additional charges may apply.



SB - Square Baffle



ASYM - Asymmetric Baffle



SKB - Sq. Kicker Baffle

Baffle Square Design

- Design cuts off light at 90°
- Baffles are lightweight black PVC with non-reflective surfaces to avoid glare from interior sections.
- One piece baffle slides onto the extruded housing making installation easy.
- SB only adds .75" to overall height
ASYM adds .90" to overall height
SKB adds 1.625" to overall height
- To specify add "SB" or "ASYM" for slanted version or "SKB" for kicker version in options box.